

Learning from Landscape Architects: Effective Community Engagement for Public Realm Design



"Like the concept. Like the whole thing. But take out the arches."

Presenters

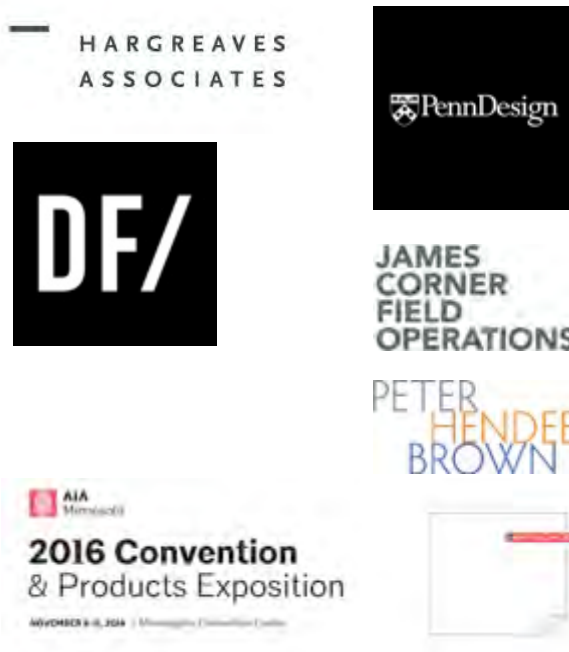
- Introductions
- About this panel
- Three Questions
- Discussion, Q&A



Mary Margaret Jones
Hargreaves Associates



Megan Born *Univ. of Pennsylvania/JCFO*



Jean Garbarini
Damon Farber



Peter H. Brown, AIA,
Moderator

The Idea Behind this Program

- Me: Architect, planner, part-time academic
- Owner's Representative
- Public Realm Projects
 - *Nicollet Mall*
 - *Commons*
 - *Peavey Plaza*
- Hiring and managing LA's for the past 6 years
- I've noticed a few things...



"I'm trying to look at it from my point of view."

My Personal Point of View

The greatest architects will be those with the creativity to design buildings that are delightful to design professionals and the public

- Robert Gifford

Always design for your client's clients

— Morris Lapidus



Urban Design

- Is a process of understanding and reconciling systems and the site
- To realize their visions LA's must understand their client's systems - and their client's clients
- The client's clients are the stakeholders, the users, and the public



"I love the way it blurs the boundary between inside and out."

My Proposition To You

Landscape architects who want to see their designs realized must lead a process that integrates:

- Planning
- Design
- Finance
- Politics
- Vision

We can learn from how they do it

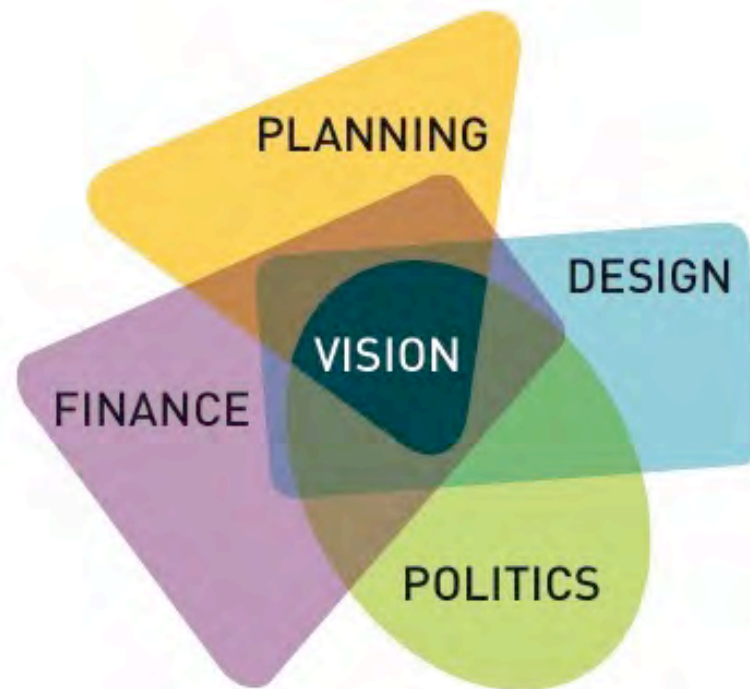


"The kid's good."

The Architect's View

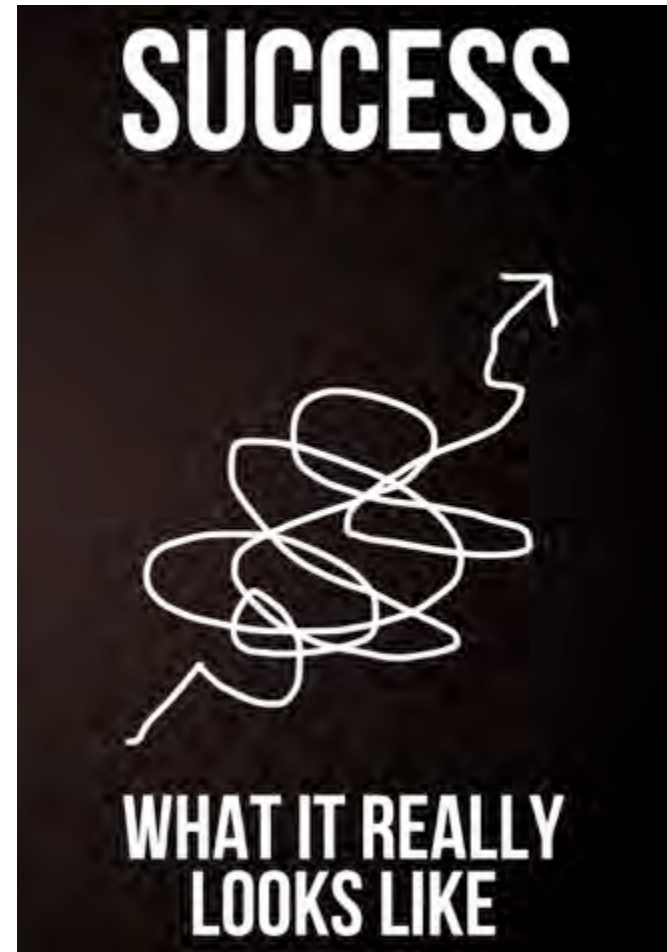


The Owner's View



Discussion Questions

- Tell us about yourself, your perspective, and your projects
- Stakeholder Engagement: Necessary evil or essential to good design?
- Planning for and implementing the engagement process
- Key tools and methods
- What is good design?



Presenters

- Introductions
- About this panel
- Three Questions
- Discussion, Q&A



Mary Margaret Jones
Hargreaves Associates



Megan Born *Univ. of Pennsylvania*



Jean Garbarini
Damon Farber



Peter H. Brown, AIA,
Moderator



Mary Margaret Jones
Hargreaves Associates



Guadalupe River Park SAN JOSE, CA



Crissy Field SAN FRANCISCO, CA



Discovery Green HOUSTON, TX



Zaryadye Park MOSCOW, RUSSIA

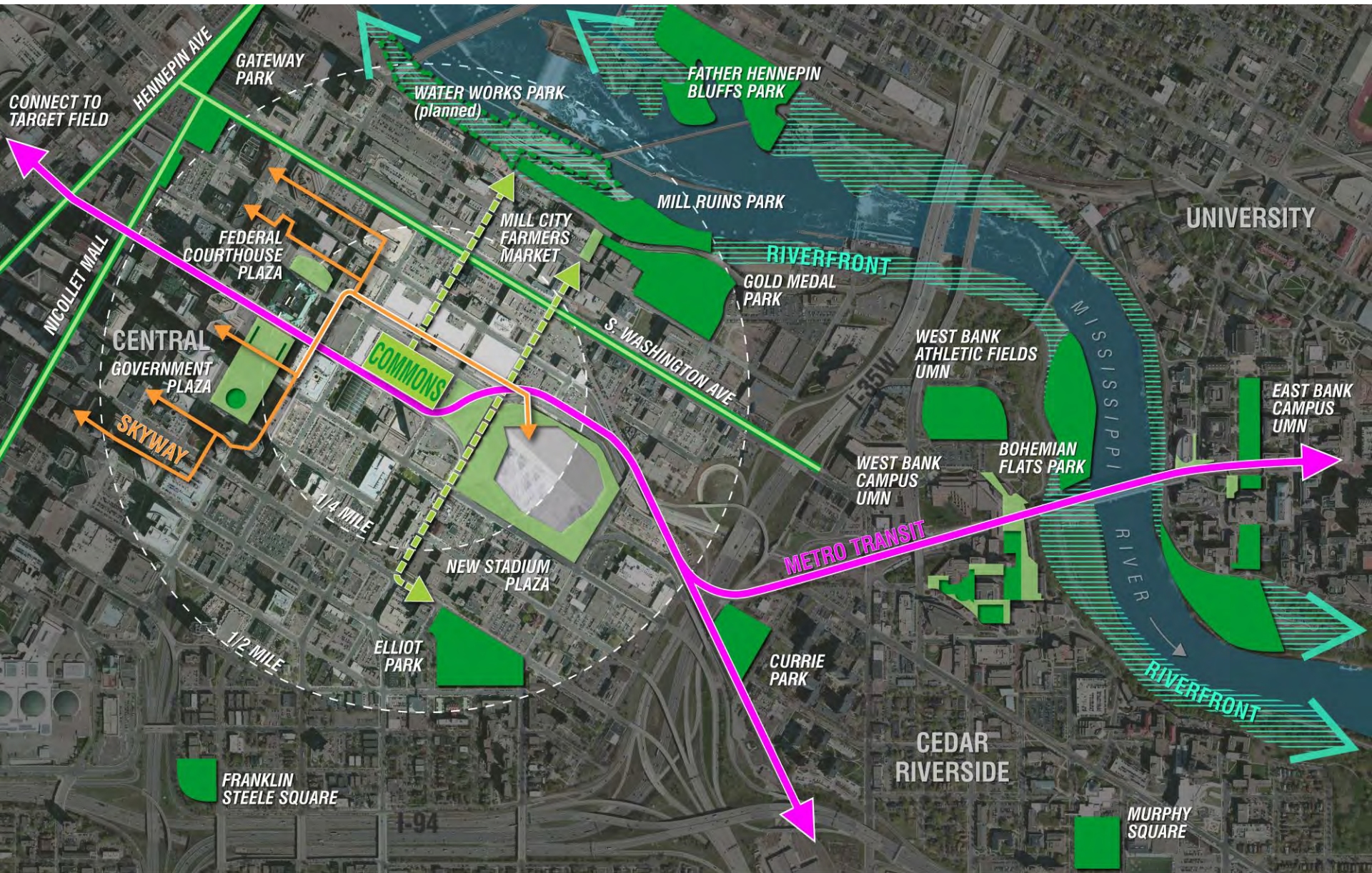


Discovery Green HOUSTON, TX



Elizabeth Caruthers Park PORTLAND, OR





PUBLIC ENGAGEMENT & OUTREACH

2015 | 2016

SPRING

SUMMER

FALL

WINTER

SPRING

SUMMER

FEEDBACK +
DESIGN

DESIGN +
CONSTRUCTION PREP

CONSTRUCTION

PHASED
OPENING

PUBLIC MEETING #1
**KICK OFF /
FEEDBACK**
February 24

PUBLIC MEETING #2
**ALTERNATIVE
APPROACHES**
April 8

PUBLIC MEETING #3
**CONCEPT
DESIGN**
May 27

PUBLIC MEETING #4
**DESIGN
PROGRESS**
October 14

COMMONS SURVEY

>2,500 RESPONSES

DOWNTOWN EAST COMMONS ACTIVITIES AND AMENITIES SURVEY

Let us know which **activities and amenities** you would like Downtown East Commons to include by checking your **3 highest priorities** within each category. The park cannot include everything on the list, but your responses will help identify broad community preferences. Fill in the blank spaces at the bottom if we forgot something.



RECREATION

- Casual pick-up games (Frisbee, catch, kite flying)
- Playground
- Sprayground / splash pad
- Picnic / BBQ
- Exercise (Tai chi, zumba, aerobics, yoga, fitness clubs)
- Ice skating
- Dog run
- Walking / biking / jogging trailhead
- Bocce / horseshoes / shuffleboard
- Curling
- Sledding
- Climbing
- Skateboarding
- _____
- _____
- _____



PERFORMANCES/ EVENTS

- Civic gathering
- Arts Festivals
- Dance / theater / poetry performances
- Music performances
- Stadium - pro-sporting related
- Stadium - other event related
- Informal / spontaneous performances
- Fun runs & walks
- Rallies
- Winter markets / winter carnival
- Farmers / flower markets
- Outdoor movies
- Weddings, birthday parties
- Corporate events
- Seasonal events (Christmas, Thanksgiving)
- Ice sculpting events
- Temporary exhibition / art
- Family / Children's events & activities
- _____
- _____
- _____



EDUCATION/ INTERPRETATION

- Historic interpretation
- Outdoor classes
- Educational events
- Environmental education
- Native plant education
- Youth / School programs
- Sustainability
- Information kiosks
- _____
- _____
- _____



SPECIAL FEATURES/ DESTINATION ATTRACTIONS

- Interactive fountains
- Public art
- Feature lighting
- Restaurant / Café / Beer garden
- Casual seating options
- Great lawn
- Public restrooms
- Food trucks
- Urban gardens
- Pavilion / Shade structures
- Bike / equipment rentals
- Stage
- _____
- _____
- _____

What is your favorite Minneapolis urban park, and why? _____

What is your favorite urban park anywhere, and why? _____

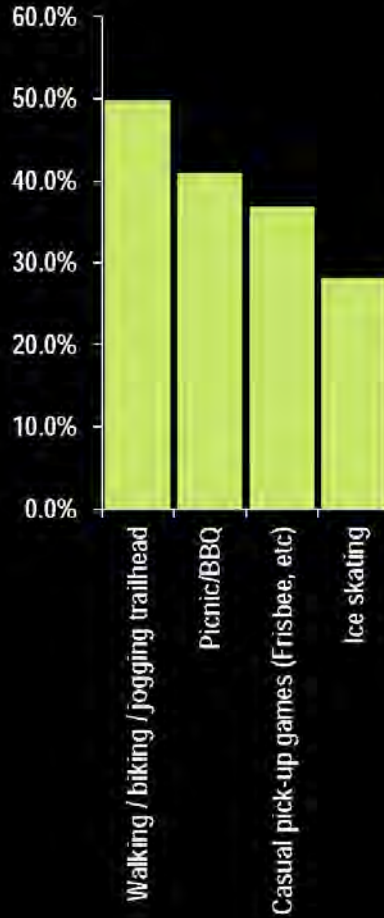
What word or phrase best describes what you think the Commons should be? _____

Zipcode where you live _____ Zipcode where you work _____

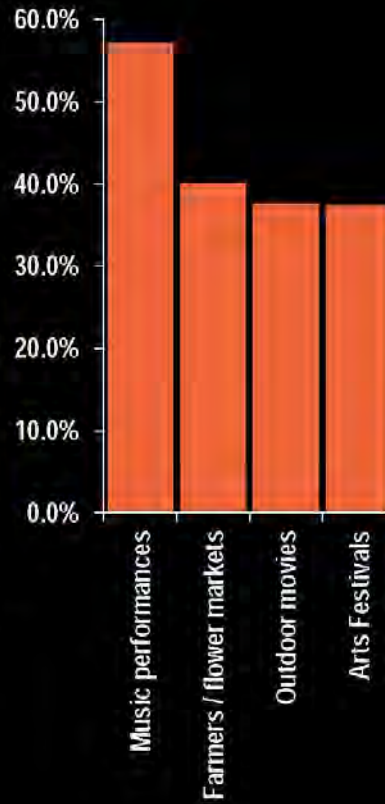
Thank you for your input!

SUMMARY OF QUESTIONS 1-4

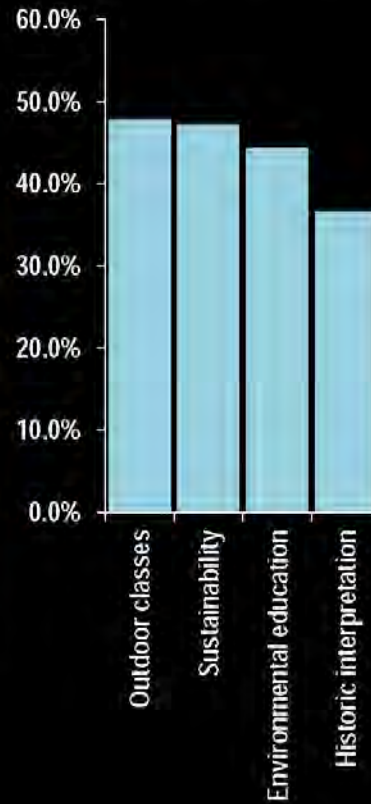
RECREATION



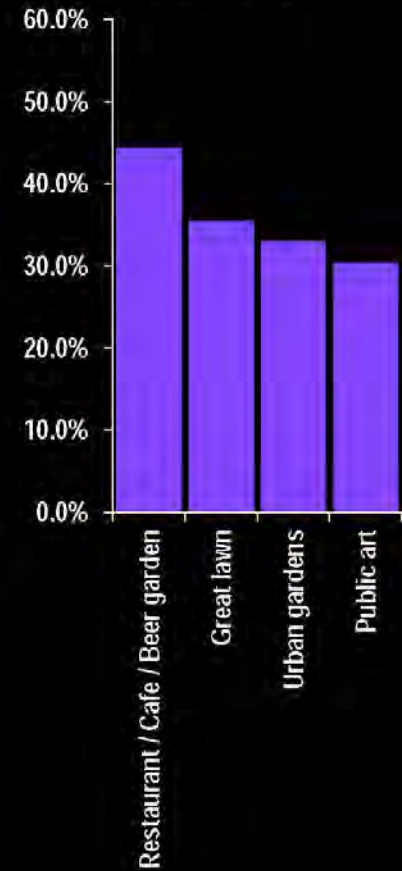
PERFORMANCES / EVENTS



EDUCATION / INTERPRETATION



SPECIAL FEATURES / DESTINATION ATTRACTIONS



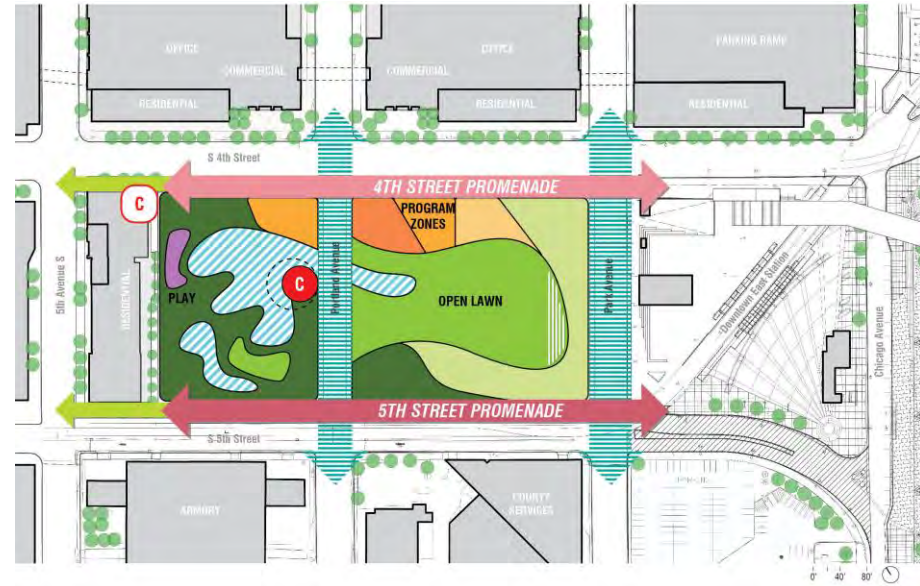
*Q7: word or phrase that best describes what you think
the Commons should be...*

Downtown Peaceful Safe Iconic Inviting Inclusive
Urban Public Beautiful Active Nature
Relaxing Welcoming Park Destination
Green Clean Community Flexible Fun Interactive
Friendly Accessible

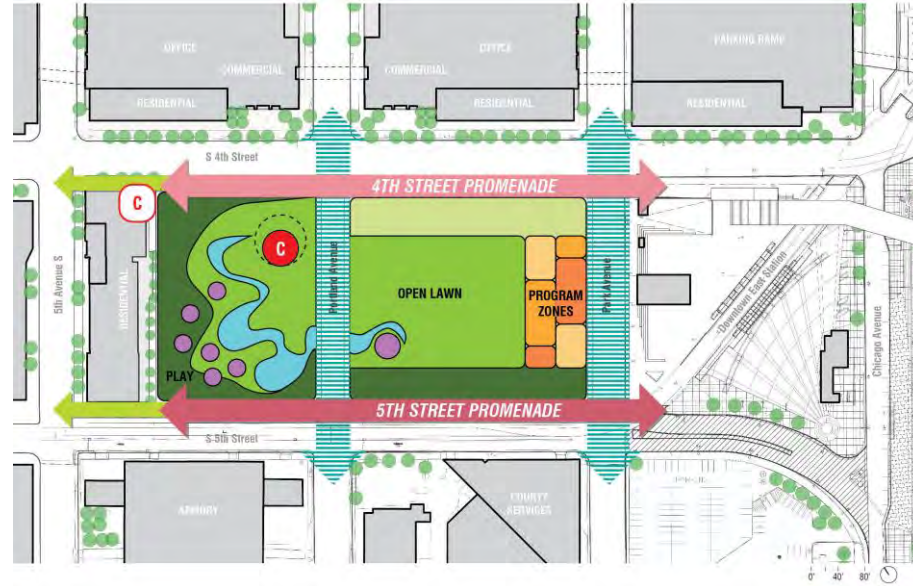
01 – CONTRAST



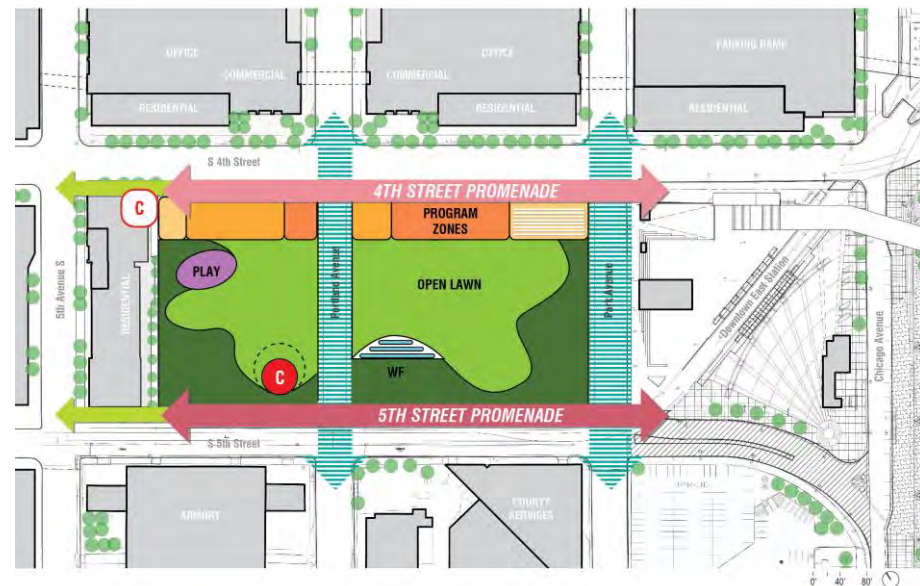
02 – CONTRAST + CONNECT



03 – CONNECT



04 – UNITE



01 – CONTRAST



02 – CONTRAST + CONNECT



03 – CONNECT



04 – UNITE

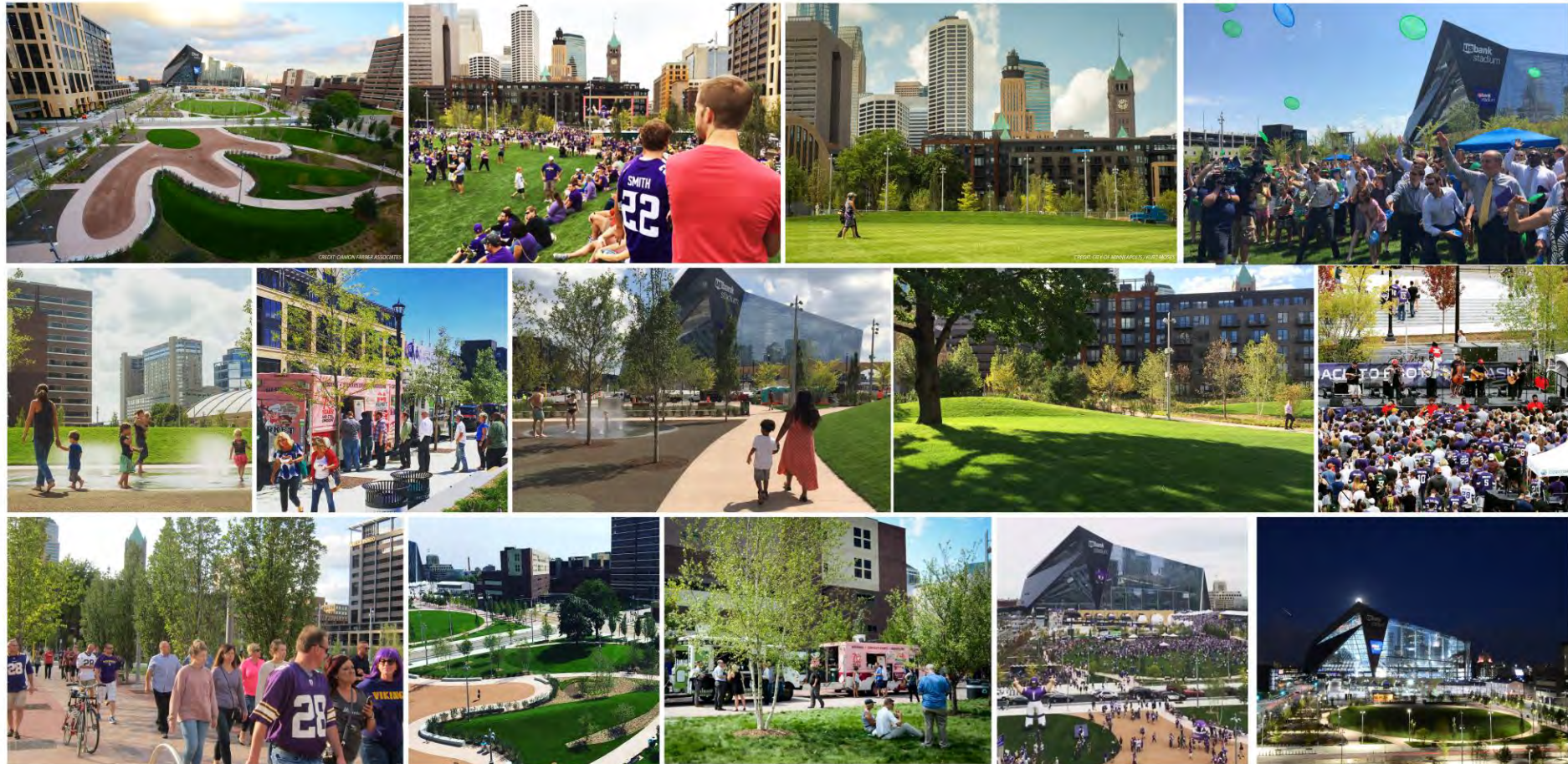






The Commons MINNEAPOLIS, MN

THE COMMONS *today...*



THE COMMONS *tomorrow...*



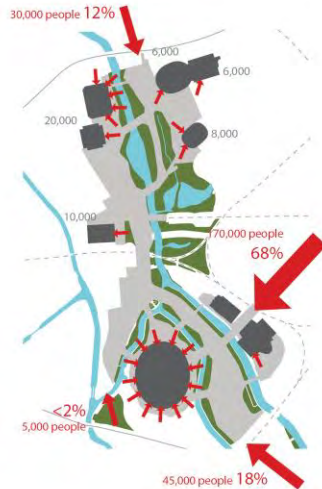
LONDON 2012 OLYMPICS



1. PREVIOUS SCHEME
HARDSCAPE TO GREENSCAPE COMPARISON

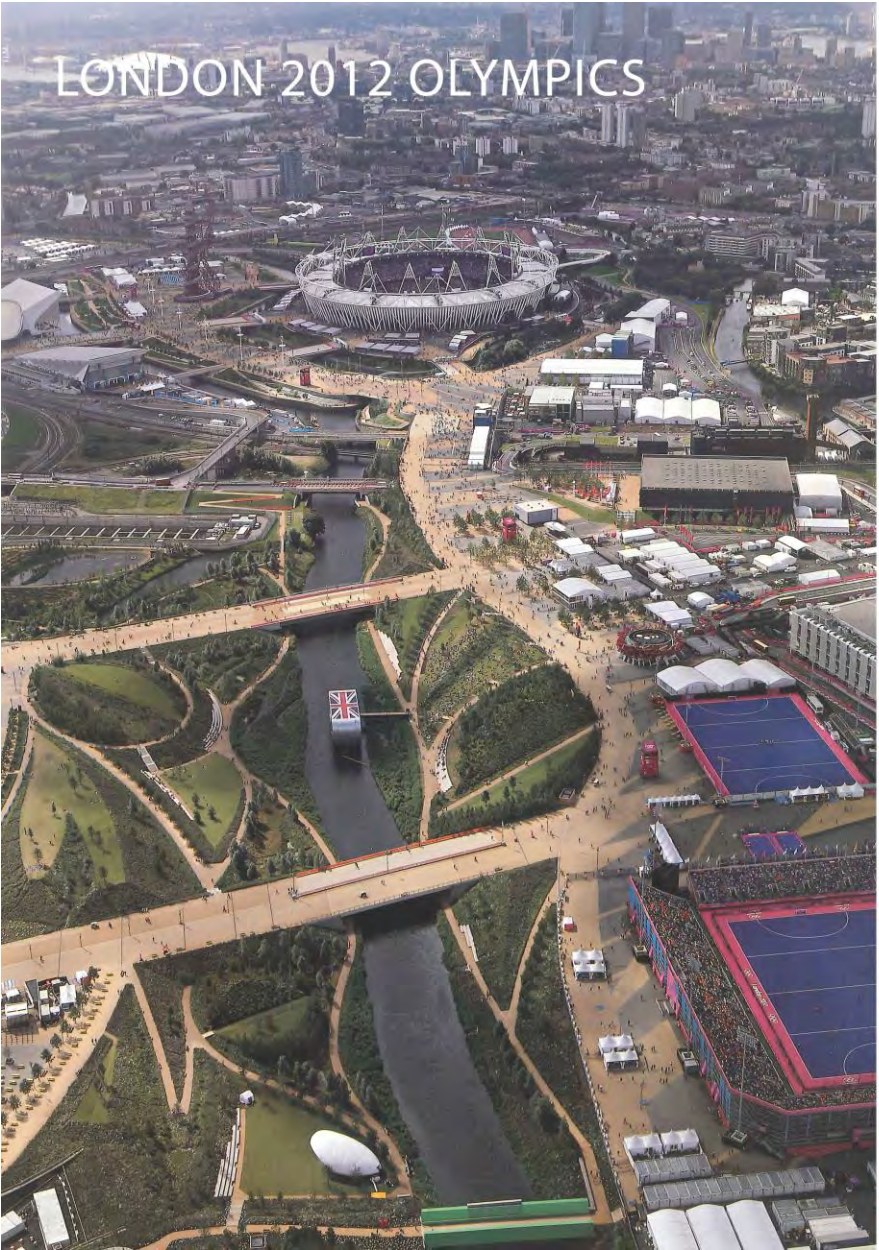


2. CROWD FLOW ANALYSIS



3. NEW SCHEME
GREENSCAPE EXPANSION

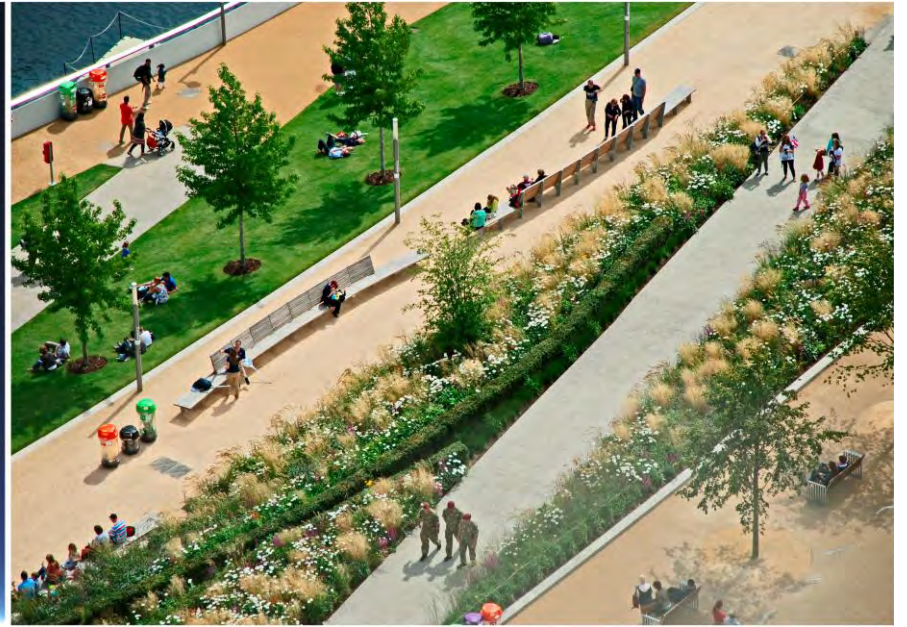




NORTH PARK



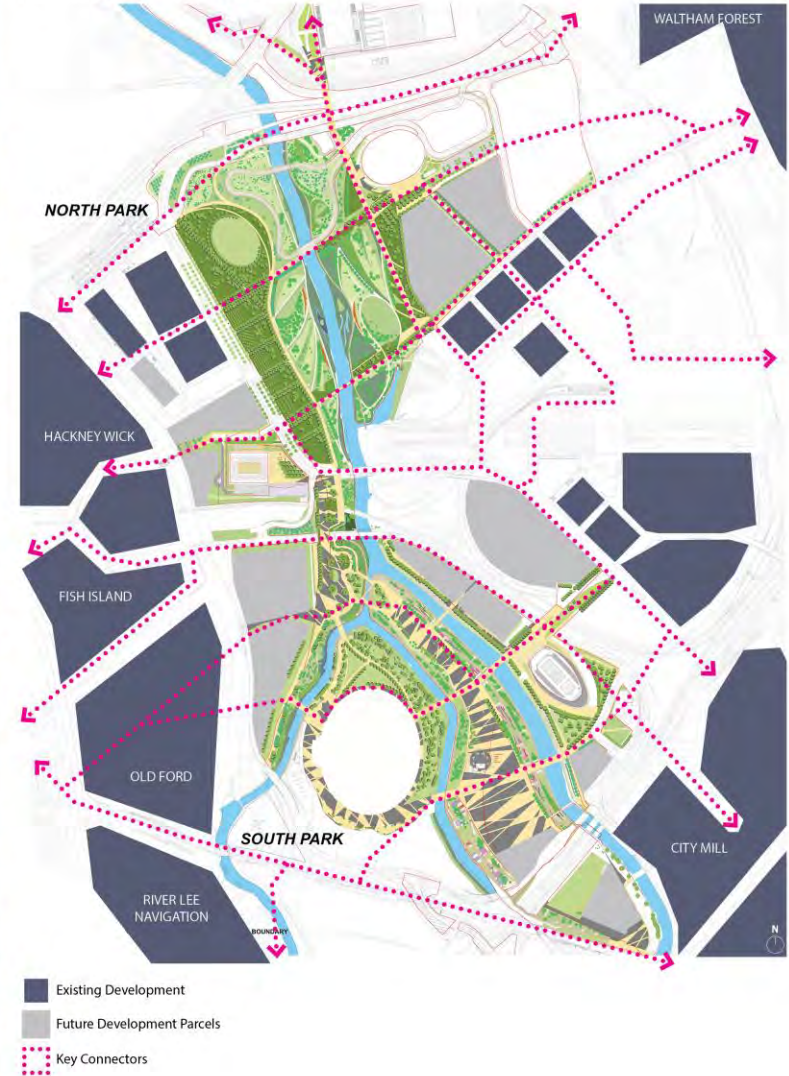
SOUTH PARK



TRANSFORMATION



POST-OLYMPICS MODE





The Biggest Little Park in the World

Strong programming—both fixed attractions and special events—draws crowds to Houston's Discovery Green, an unusual
Landscape Architecture, Dec. 2009

hybrid of park, sculpture garden, and fairground. By Daniel Jost

ALWAYS SOMETHING ON AT THE PARK

programming for ALL seasons and ALL users



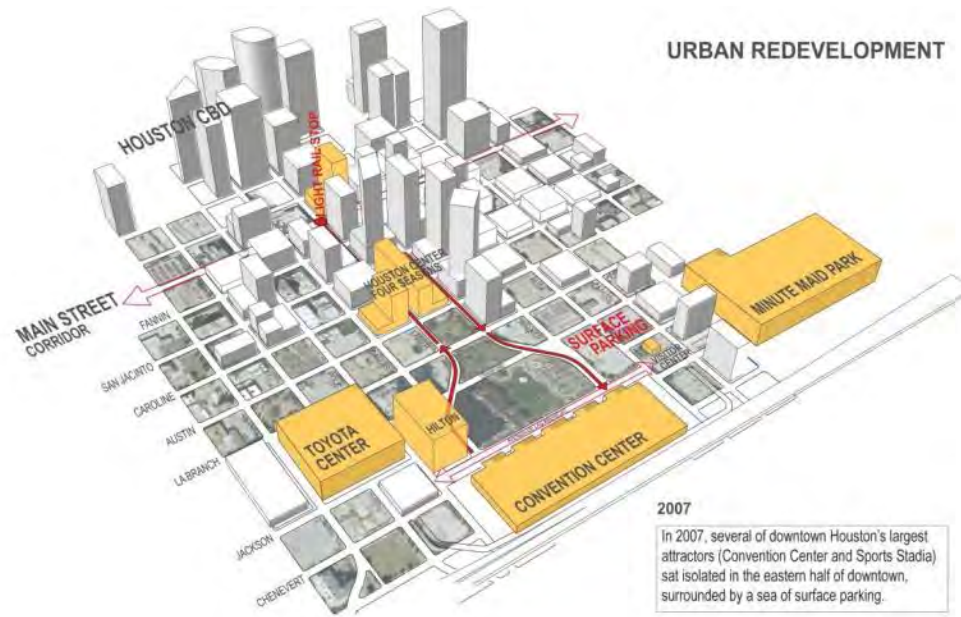
IDENTIFY EVENT BY COLOR: SPECIAL EVENTS

Mar

Central City Co-op Downtown Green Market 12 - 4 p.m. Andrea and Bill White Promenade	Biologer's Recycling Saturdays 10 a.m. - 2 p.m. Andrea and Bill White Promenade	Guaranty Bank Tour de Houston 7 a.m. - 1 p.m. Andrea and Bill White Promenade, Anheuser-Busch Stage and Fondren Performance Space	Tai Chi in the Park 12 - 1 p.m. Anheuser-Busch Stage
Nia Moves 1 - 2 p.m. Fondren Performance Space	Bike Repair Workshop 10 a.m. - 2 p.m. Andrea and Bill White Promenade	Central City Co-op Downtown Green Market 12 - 4 p.m. Andrea and Bill White Promenade	Capital One Bank's Thursdays Rocks! EXTREME WII! 6:30 p.m. Anheuser-Busch Stage and Fondren Performance Space
Four Seasons' Sundays in the Park: Spain Colored Orange 3 - 5 p.m. Anheuser-Busch Stage	Young Writers Workshop 10:30 - 11:30 a.m. Lake House Building	Nia Moves 1 - 2 p.m. Fondren Performance Space	Yoga in the Park with TUTS 9:30 - 10:30 a.m. Anheuser-Busch Stage
Pilates in the Park with TUTS 6 - 7 p.m. Anheuser-Busch Stage	Hip2BFit Fun Club! 11:30 a.m. - 12 p.m. Anheuser-Busch Stage	Wells Fargo's Discovery Series: Jaguar Sun 1 - 3 p.m. Anheuser-Busch Stage	Biologer's Recycling Fair 10 a.m. - 2 p.m. Andrea and Bill White Promenade
Zumba! 6 - 7 p.m. Grace Event Lawn	Wells Fargo's Discovery Series: Jose-Elisabel Torral 9 - 5 p.m. Anheuser-Busch Stage	St. Patrick's Day Parade, After Parade Party 1 - 3 p.m. Anheuser-Busch Stage and Fondren Performance Space	Bike Repair Workshop 10 a.m. - 2 p.m. Andrea and Bill White Promenade
Tai Chi in the Park 12 - 1 p.m. Anheuser-Busch Stage	Central City Co-op Downtown Green Market 12 - 4 p.m. Andrea and Bill White Promenade	Central City Co-op Downtown Green Market 12 - 4 p.m. Andrea and Bill White Promenade	Young Writers Workshop 10:30 - 11:30 a.m. Lake House Building
Capital One Bank's Thursdays Rocks! EXTREME WII! 6:30 p.m. Anheuser-Busch Stage and Fondren Performance Space	Nia Moves 1 - 2 p.m. Fondren Performance Space	Four Seasons' Sundays in the Park: Jose-Elisabel Torral 9 - 5 p.m. Anheuser-Busch Stage	Hip2BFit Fun Club! 11:30 a.m. - 12 p.m. Anheuser-Busch Stage
KUNF Front Row Live 12 p.m. Anheuser-Busch Stage	Four Seasons' Sundays in the Park: Jose-Elisabel Torral 9 - 5 p.m. Anheuser-Busch Stage	Pilates in the Park with TUTS 6 - 7 p.m. Anheuser-Busch Stage	Wells Fargo's Discovery Series: HTS Beauty and the Beast 12 p.m. Anheuser-Busch Stage
KUNF Silent Film Concerts: Destiny 7 p.m. Anheuser-Busch Stage and Fondren Performance Space	Pilates in the Park with TUTS 6 - 7 p.m. Anheuser-Busch Stage	Zumba! 6 - 7 p.m. Grace Event Lawn	Pocket Full of Soul Music and Film Festival 5:30 - 10 p.m. Anheuser-Busch Stage and Fondren Performance Space
Yoga in the Park with TUTS 9:30 - 10:30 a.m. Anheuser-Busch Stage	Zumba! 6 - 7 p.m. Grace Event Lawn	Tai Chi in the Park 12 - 1 p.m. Anheuser-Busch Stage	Central City Co-op Downtown Green Market 12 - 4 p.m. Andrea and Bill White Promenade
Biologer's Recycling Fair 10 a.m. - 2 p.m. Andrea and Bill White Promenade	Tai Chi in the Park 12 - 1 p.m. Anheuser-Busch Stage	Young Writers Workshop 10:30 - 11:30 a.m. Lake House Building	Nia Moves 1 - 2 p.m. Fondren Performance Space
Bike Repair Workshop 10 a.m. - 2 p.m. Andrea and Bill White Promenade	Capital One Bank's Thursdays Rocks! EXTREME WII! 6:30 p.m. Anheuser-Busch Stage and Fondren Performance Space	Hip2BFit Fun Club! 11:30 a.m. - 12 p.m. Anheuser-Busch Stage	Four Seasons' Sundays in the Park: Space City Guardians 3 - 5 p.m. Anheuser-Busch Stage
Young Writers Workshop 10:30 - 11:30 a.m. Lake House Building	Fresh Fridays: Home Grown Motion 7 p.m. Anheuser-Busch Stage and Fondren Performance Space	Wells Fargo's Discovery Series: Brother Tadpoles 12 p.m. Anheuser-Busch Stage	Film Premiere: Speeding Motorcycle 6 - 10 p.m. Anheuser-Busch Stage and Fondren Performance Space
Hip2BFit Fun Club! 11:30 a.m. - 12 p.m. Anheuser-Busch Stage	Yoga in the Park with TUTS 9:30 - 10:30 a.m. Anheuser-Busch Stage	Houston Grand Opera: Move! Night: Andrea Pavesin 7 p.m. Anheuser-Busch Stage and Fondren Performance Space	Pilates in the Park with TUTS 6 - 7 p.m. Anheuser-Busch Stage
Wells Fargo's Discovery Series: Hip2BFit, the Musical 12 p.m. Anheuser-Busch Stage	Biologer's Recycling Saturdays 10 a.m. - 2 p.m. Andrea and Bill White Promenade	Central City Co-op Downtown Green Market 12 - 4 p.m. Andrea and Bill White Promenade	Zumba! 6 - 7 p.m. Anheuser-Busch Stage
Central City Co-op Downtown Green Market 12 - 4 p.m. Andrea and Bill White Promenade	Bike Repair Workshop 10 a.m. - 2 p.m. Andrea and Bill White Promenade	Nia Moves 1 - 2 p.m. Fondren Performance Space	Inprint: Reading on the Green 7 p.m. Grace Event Lawn
Nia Moves 1 - 2 p.m. Fondren Performance Space	Young Writers Workshop 10:30 - 11:30 a.m. Lake House Building	Four Seasons' Sundays in the Park: Moodataraka 3 - 5 p.m. Anheuser-Busch Stage	Tai Chi in the Park 12 - 1 p.m. Anheuser-Busch Stage
Pilates in the Park with TUTS 6 - 7 p.m. Anheuser-Busch Stage	Hip2BFit Fun Club! 11:30 a.m. - 12 p.m. Anheuser-Busch Stage	Wells Fargo's Discovery Series: Tuts Summer Stock Preview 12 p.m. Anheuser-Busch Stage	Capital One Bank's Thursdays Rocks! EXTREME WII! 6:30 p.m. Anheuser-Busch Stage and Fondren Performance Space
Zumba! 6 - 7 p.m. Grace Event Lawn	Wells Fargo's Discovery Series: Tuts Summer Stock Preview 12 p.m. Anheuser-Busch Stage	Houston Arts Alliance Showcases: South Texas Indian Dancers Association 1 - 3 p.m. Anheuser-Busch Stage and Fondren Performance Space	Yoga in the Park with TUTS 9:30 - 10:30 a.m. Anheuser-Busch Stage
Tai Chi in the Park 12 - 1 p.m. Anheuser-Busch Stage	Divinas 2009: A 2009 Texas Sor Juana Festival Event 7 p.m. Anheuser-Busch Stage and Fondren Performance Space	Pilates in the Park with TUTS 6 - 7 p.m. Anheuser-Busch Stage	Biologer's Recycling Saturdays 10 a.m. - 2 p.m. Andrea and Bill White Promenade
Capital One Bank's Thursdays Rocks! EXTREME WII! 6:30 p.m. Anheuser-Busch Stage and Fondren Performance Space		Zumba! 6 - 7 p.m. Grace Event Lawn	Bike Repair Workshop 10 a.m. - 2 p.m. Andrea and Bill White Promenade
		Houston Film Festival Anheuser-Busch Stage and Fondren Performance Space	Young Writers Workshop 10:30 - 11:30 a.m. Lake House Building
			Hip2BFit Fun Club! 11:30 a.m. - 12 p.m. Anheuser-Busch Stage
			Wells Fargo's Discovery Series: Earth Day Festival 12 p.m. Anheuser-Busch Stage

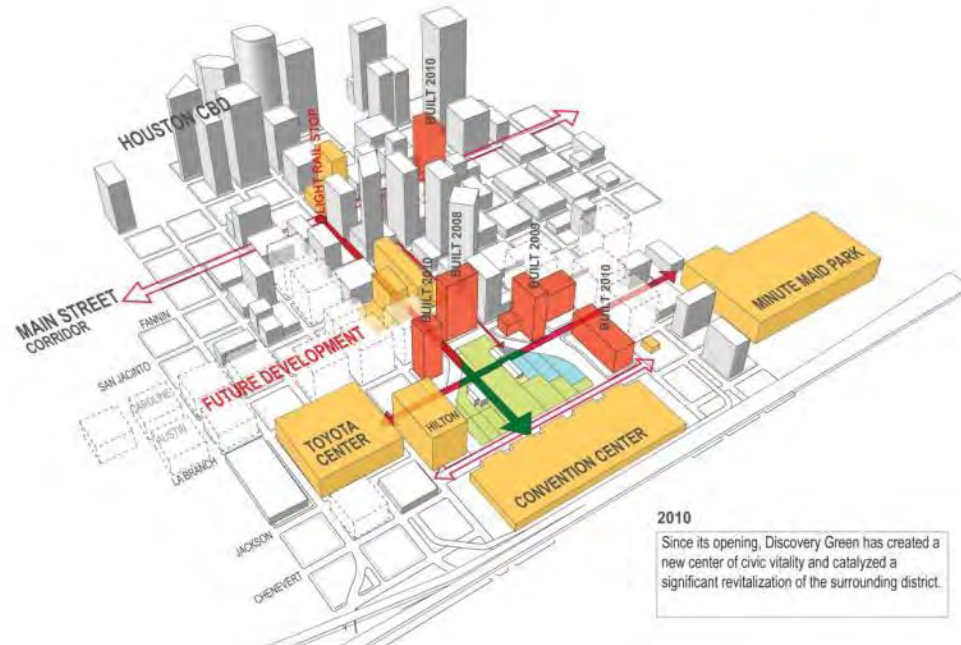
Apr

URBAN REDEVELOPMENT



2007

In 2007, several of downtown Houston's largest attractors (Convention Center and Sports Stadium) sat isolated in the eastern half of downtown, surrounded by a sea of surface parking.



2010

Since its opening, Discovery Green has created a new center of civic vitality and catalyzed a significant revitalization of the surrounding district.



Discovery Green HOUSTON, TX



2015 Year in Review

Discovery Green helps Houston grow as a home for talent, creativity, health and prosperity by offering a unique and affordable green space to enjoy what is best about Houston, connect with fellow Houstonians, and experience what is wonderfully authentic about our community.

Creating Opportunites for Exploration, Magic and Joy



Creating a Village Green in the heart of Houston



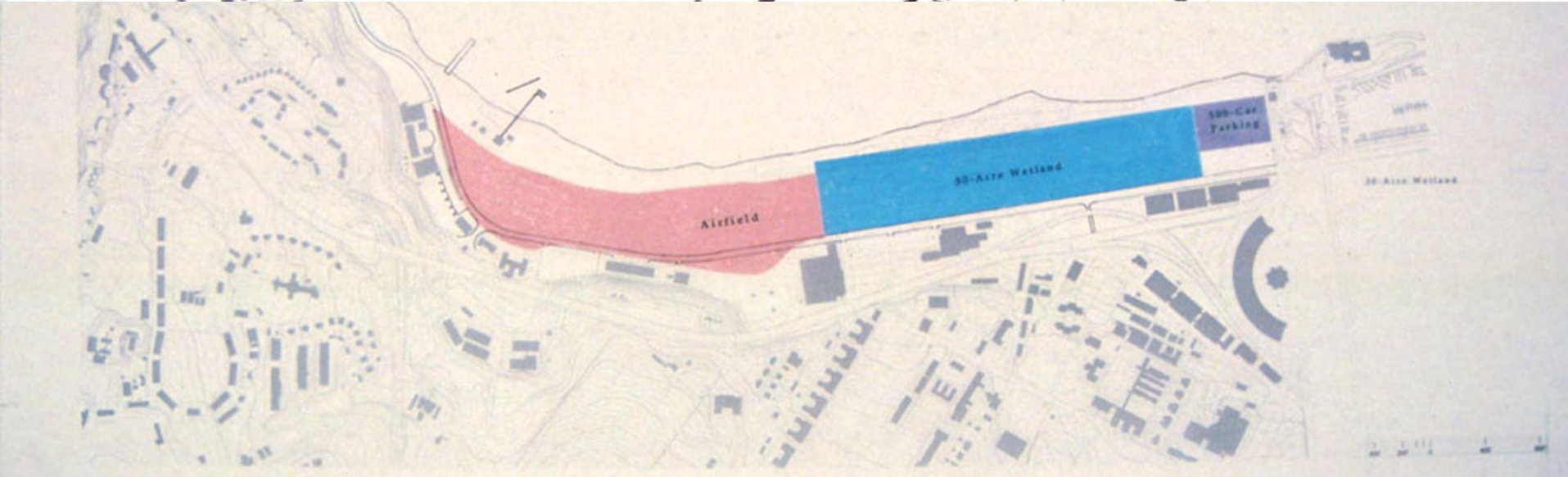
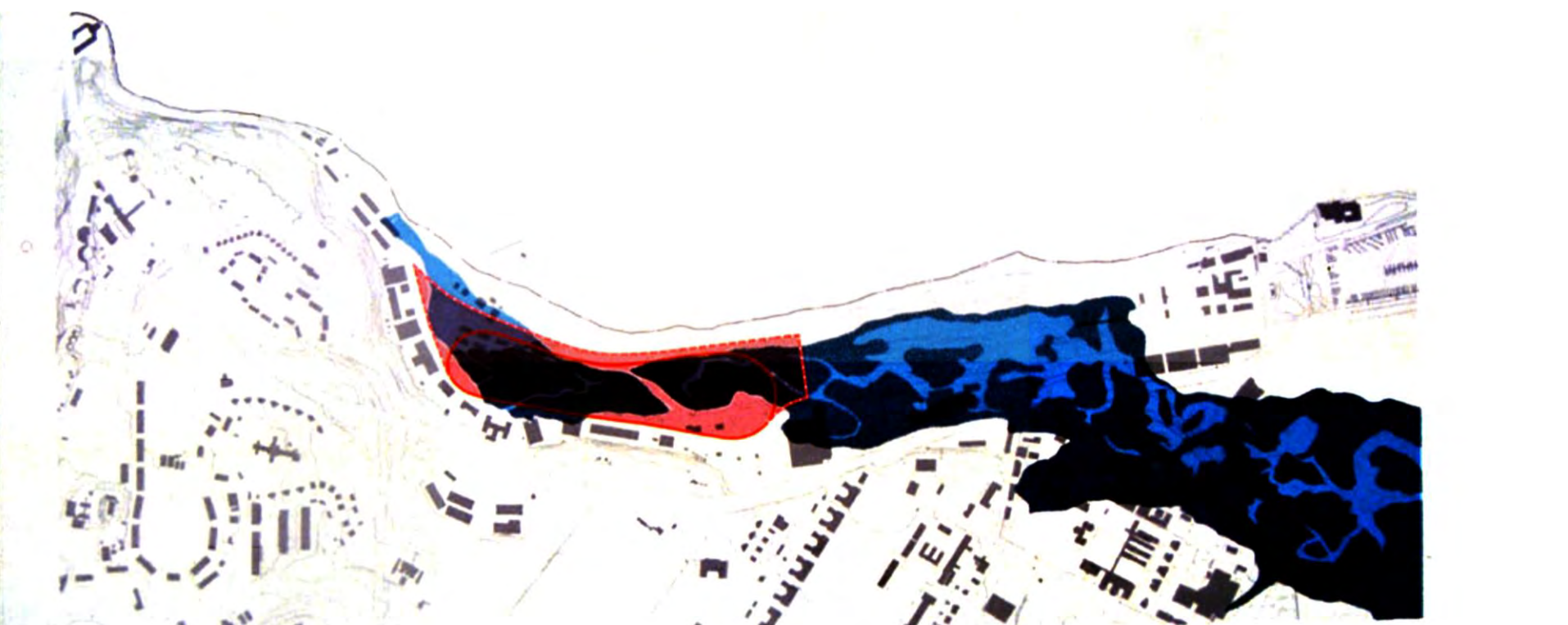


Crissy Field SAN FRANCISCO, CALIFORNIA



Crissy Field SAN FRANCISCO, CALIFORNIA









Crissy Field SAN FRANCISCO, CALIFORNIA



Crissy Field SAN FRANCISCO, CALIFORNIA



Crissy Field SAN FRANCISCO, CALIFORNIA





Megan Born *Univ. of
Pennsylvania*



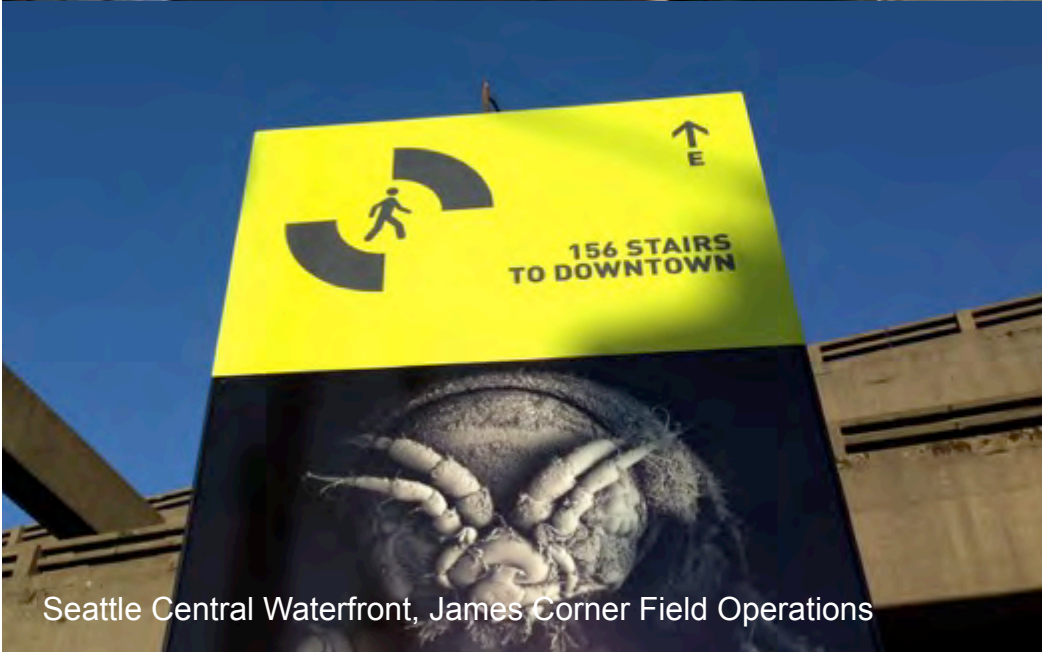
Seattle Central Waterfront, James Corner Field Operations



Seattle Central Waterfront, James Corner Field Operations



Seattle Central Waterfront, James Corner Field Operations



Seattle Central Waterfront, James Corner Field Operations



Seattle Central Waterfront, James Corner Field Operations



Seattle Central Waterfront, James Corner Field Operations



Seattle Central Waterfront, James Corner Field Operations



Nicollet Mall, James Corner Field Operations

PUBLIC MEETING INTERACTIVE BOARDS

FAVORITE PLACES ON NICOLLET MALL TODAY:

WESTMINSTER PRESBYTERIAN CHURCH, PEAVEY PLAZA, IDS AND THE CRYSTAL COURT, MINNEAPOLIS CENTRAL LIBRARY



MOST POPULAR FUTURE ACTIVITIES ON THE MALL:

RESTAURANTS & BARS, FOLLOWED BY WALKING, RUNNING & CYCLING



GRAFFITI BOARD:

HOW CAN NICOLLET MALL BE EVEN BETTER?



"GREAT STREETS" BOARD

MOST POPULAR: 16TH STREET MALL, DENVER; PEARL STREET MALL, BOULDER; FANEUIL HALL, BOSTON

WHAT GREAT STREET SHOULD NICOLLET ASPIRE TO?

PICK YOUR TOP TWO STREETS

Street Name	City	Length	Width
Nicollet Mall	Minneapolis, MN	0.9 Miles	50 Feet
Third Street Promenade	Santa Monica, CA	0.4 Miles	50 Feet
16th Street Mall	Denver, CO	0.8 Miles	72 Feet
Aleksanterinkatu	Helsinki, Finland	0.6 Miles	50 Feet
Michigan Avenue	Chicago, IL	2.5 Miles	120 Feet
Pearl Street	Boulder, CO	0.3 Miles	90 Feet
Stephen Avenue	Calgary, Canada	1.0 Mile	50 Feet
Transit Mall	Portland, OR	1.0 Mile	50 Feet
Exhibition Road	London, UK	0.4 Miles	70 Feet
State Street	Madison, WI	0.8 Miles	50 Feet
Place Jaques Cartier	Montreal, Canada	0.1 Miles	120 Feet
Faneuil Hall Marketplace	Boston, MA	0.1 Miles	90 Feet

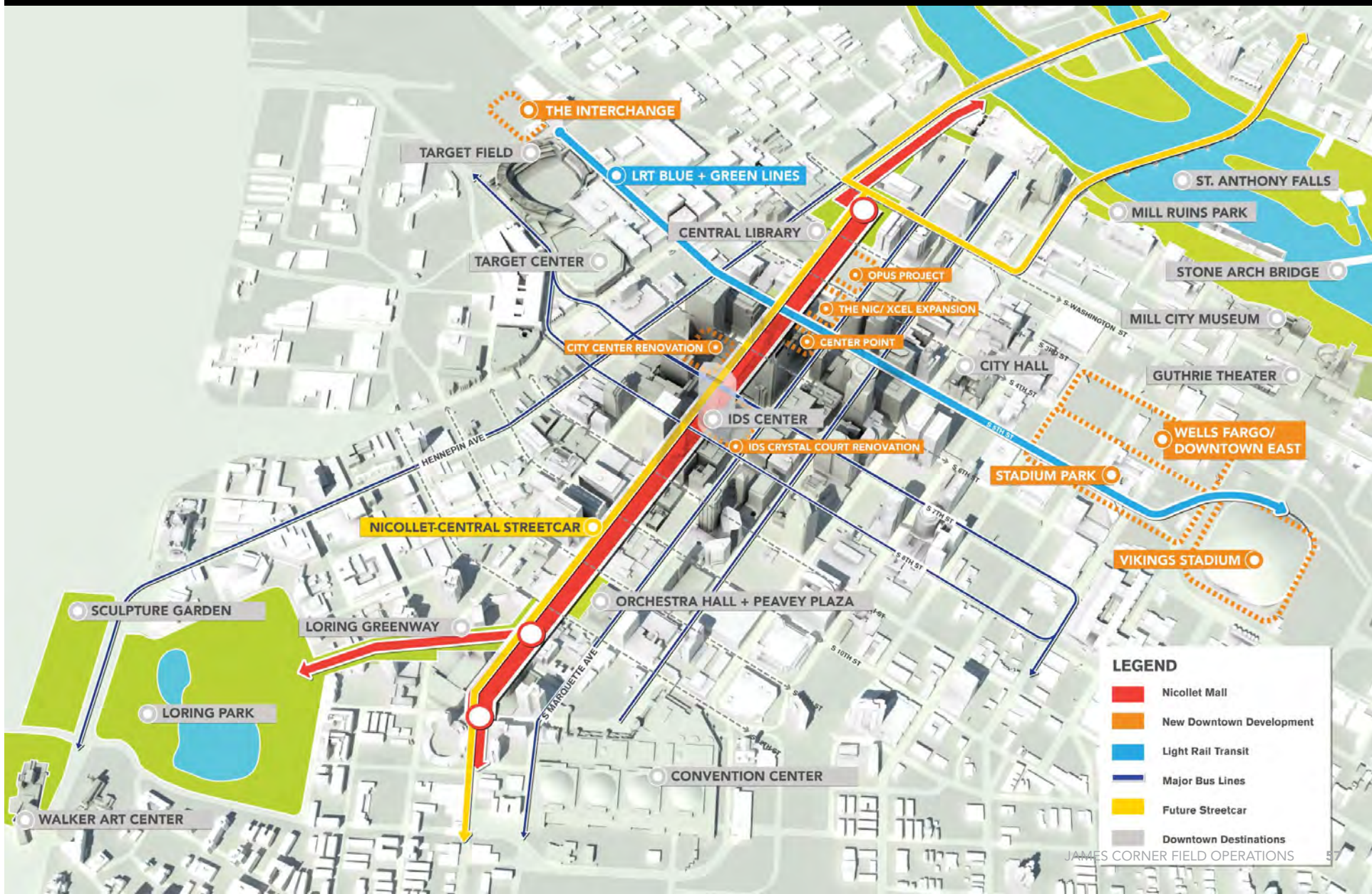
The board features 12 photographs of different city streets, each with a yellow double-headed arrow indicating its width and a yellow dot indicating its length. Numerous yellow sticky notes are placed over the photos, providing handwritten feedback and suggestions. A large yellow question mark is prominently displayed on the left side of the board.

Nicollet Mall, James Corner Field Operations

RETAILERS
RESTAURANT OWNERS/OPERATORS
BUILDING OWNERS/OPERATORS
NICOLLET MALL ADVISORY GROUP
DOWNTOWN COUNCIL - GREEN STREETSCAPES TASK FORCE
DOWNTOWN COUNCIL - MDC 2025 DEVELOPMENT COMMITTEE
ARTS COMMISSION, PUBLIC ART ADVISORY PANEL
PEDESTRIAN ADVISORY COMMITTEE
BICYCLE ADVISORY COMMITTEE, ENGINEERING SUBCOMMITTEE
MN LEGISLATORS AND STAFF
GOVERNOR'S OFFICE
MINNEAPOLIS CONVENTION CENTER
NORTH LOOP NEIGHBORHOOD ASSOCIATION (NLNA)
CITIZENS FOR A LORING PARK COMMUNITY (CLPC)
SHORENSTEIN PROPERTIES LLC (OWNER, CITY CENTER)
XCEL ENERGY (OWNER XCEL, 4TH& NICOLLET)
LUNCH WITH LISA – CM GOODMAN AND WARD 7 CONSTITUENTS

THE OPUS GROUP (DEVELOPER, NIC ON 5TH)
CENTERPOINT ENERGY
LORING BUSINESS ASSOCIATION
DOWNTOWN MINNEAPOLIS NEIGHBORHOOD ASSOCIATION (DMNA)
WESTMINSTER PRESBYTERIAN CHURCH
COMMITTEE FOR CITIZENS WITH DISABILITIES
MINNEAPOLIS BICYCLE COALITION
METROPOLITAN COUNCIL
METROTRANSIT
MORTENSON (DEVELOPER OF 4MARQ)
COMMITTEE FOR CITIZENS WITH DISABILITIES, ACCESS COMMITTEE
MINNEAPOLIS PARK AND RECREATION BOARD & STAFF
MINNEAPOLIS TREE ADVISORY COMMITTEE
MN LANDSCAPE ARBORETUM
MINNEAPOLIS POLICE DEPARTMENT, DID SAFETY AMBASSADORS
MINNEAPOLIS CENTRAL LIBRARY
YWCA

Nicollet Mall, James Corner Field Operations



Nicollet Mall, James Corner Field Operations



Nicollet Mall, James Corner Field Operations



Nicollet Mall, James Corner Field Operations

NICOLLET MALL FRAMEWORK



1. LORING WOODS PLAZA



2. READING ROOM



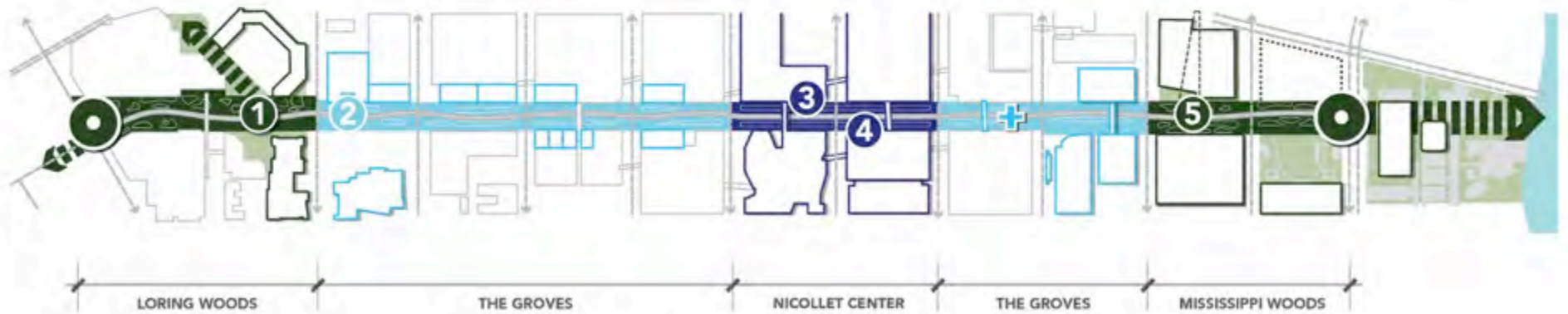
3. ART WALK



4. LIGHT WALK



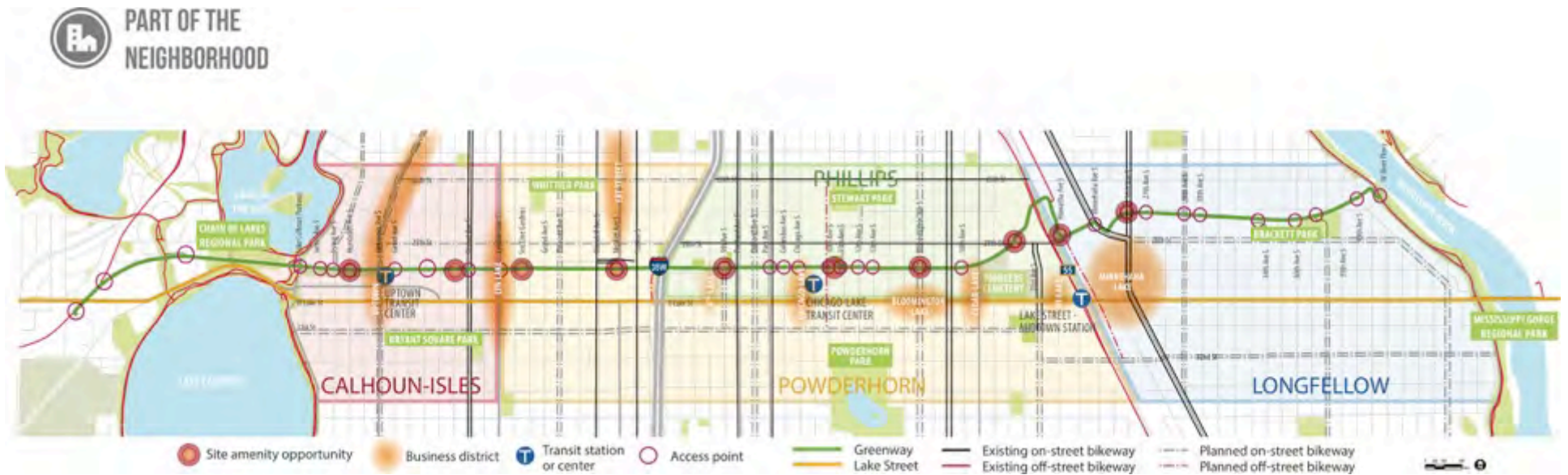
5. THEATER-IN-THE-ROUND

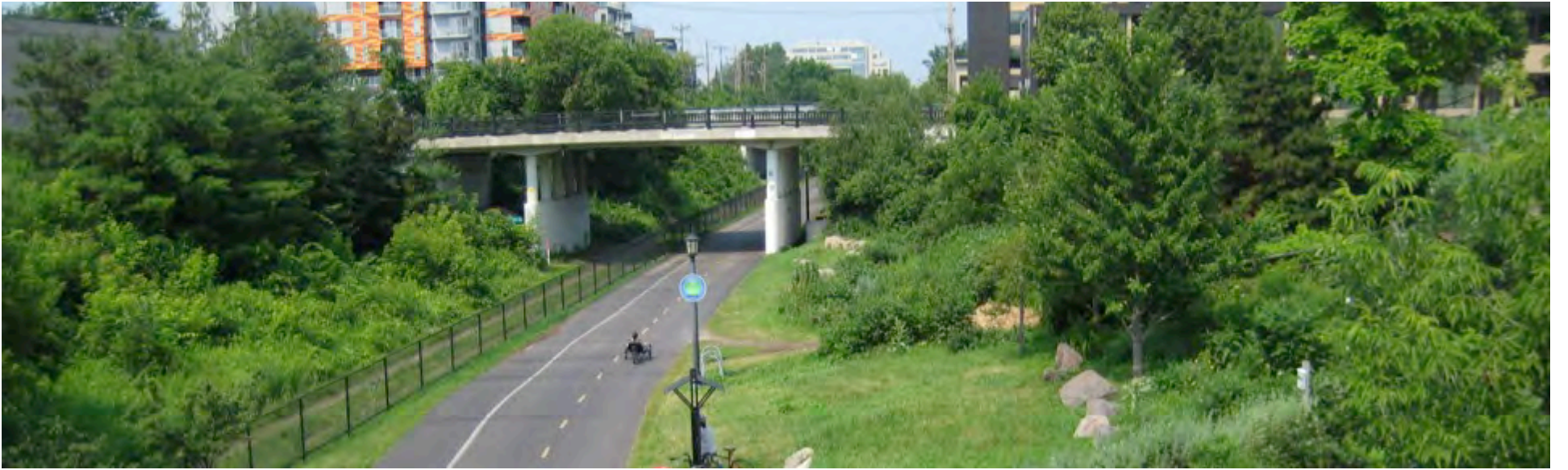




Jean Garbarini
Damon Farber

Midtown Greenway











LISTENING TO THE COMMUNITY

2015 OUTREACH EFFORTS

- 21 interviews with local businesses
- 6 community meetings with 154 people attending
- 4 focus groups with underrepresented communities, total of 44 people attending
- 5 community events with 282 people
- 6 small groups/workshops with 119 people
- 610 people surveyed online and at 5 public opportunities along the Greenway



CHALLENGES AND OPPORTUNITIES

WHICH IMPROVEMENTS WOULD BETTER CONNECT YOU TO DESTINATIONS FROM THE GREENWAY?

	Very helpful	Helpful	Not helpful
Map kiosks at intersections	62%	34%	4%
Graphics along pathway to/from destinations	54%	39%	6%
Tell visible elements at all water points and near destinations	50%	45%	5%
Gateways that make entrances more visible	43%	48%	9%

HOW OFTEN DO PEOPLE USE THE GREENWAY TO GO TO LAKE STREET?



WHAT WE HEARD FROM PEOPLE OF COLOR

- The Greenway doesn't seem like it's for me and my family
- Images and art from my cultural community would make me feel more comfortable
- The Greenway doesn't feel like a safe place for me to go. I don't feel welcome or protected there
- Programs/activities to connect diverse communities to the Greenway would encourage more use

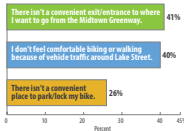
WHAT BUSINESS OWNERS SAID

- Nearly all businesses thought it would help to be better connected to the Greenway
- 3 out of 4 want to attract more bicyclists to their business and were interested in promotions for those customers
- 73% were willing to participate in the city's cost-share bike parking program

INFLUENCE OF DESIGN EXPERIMENTS

- 77% of people surveyed felt the design experiments had a positive impact on their Greenway experience
- Encouraged 14 people surveyed to change their route or destination

WHAT PREVENTS YOU FROM GOING TO A LAKE STREET BUSINESS OR NEARBY CULTURAL DESTINATION?



DEMOGRAPHICS OF SURVEY RESPONDENTS

Race	Percent
American Indian/Native American	3.8%
Asian/Pacific Islander	3.2%
Black/African American	8.2%
East/West African	1.6%
Hispanic/Latino	2.7%
Multiracial	4.1%
White/Caucasian	82.2%
Other	3.2%

NEXT STEPS

IMPLEMENTING THE PLAN

Continued participation from all of the Community Works partners—including neighborhood and community organizations along the Greenway—is essential as we seek to implement the improvements outlined in this plan. Together we will follow up on existing opportunities and identify new ones, build new partnerships, and seek funding from organizations that may support many solutions in the plan. Examples of potential funding sources appear in the chart at right.

Visit www.hennepin.us/midtown to sign up for project updates, view supporting documents, and learn more about the "Making the Connections" plan.

WHAT'S IN IT FOR THE COMMUNITY?



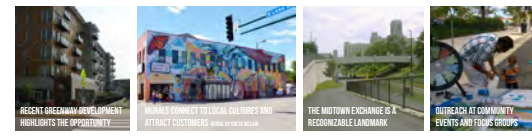
MIDTOWN COMMUNITY WORKS PARTNERS

MAKING THE CONNECTION: MIDTOWN GREENWAY TO LAKE STREET

MAY 2016



DESIGN EXPERIMENT: SITE AMENITIES, WAYFINDING, AND ACTIVITIES AT CEPRA, NEAR THE MIDTOWN GLOBAL MARKET



HOW TO ENSURE SUCCESS ALONG THE GREENWAY/LAKE STREET CORRIDOR

Two decades ago, the Midtown Greenway was a skeletal railroad trench. Now each year people take more than a million trips on this unique street car free trail connecting the Chicago River and the Chain of Lakes. The nation's largest "green infrastructure" has encouraged commerce, development and thousands of new housing units to sprout along the Greenway — and in the process, helped to reduce the tax base, one of the key goals of Hennepin County's Community Works Initiative. This new street carport adds some housing and destinations near the Greenway's 1.5-mile route, including Lake Street, offering commercial districts, new safety, significant physical and cultural barriers stand in the way of many people who might want to use the Greenway, or gain access to it.

These mixed connections present a challenge to the Greenway's effectiveness as a transportation route and neighborhood asset. Recently they've been the focus of extensive research and community outreach by the Midtown Community Works partners: Hennepin County, the City of Minneapolis, the Midtown Greenway Coalition and the Lake Street Council.

CONNECTING TO THE TRANSPORTATION NETWORK

Greenway entrances are hard to find and gate to bike and pedestrian traffic is often to and from the Greenway making it difficult to reach it. And from the Greenway it's hard to find the right exit to get to the bus and light rail stations. Making the Greenway easier to use and connect to other transportation modes, such as bike parking, bus stops, and light rail stations, will enhance that experience.

PART OF THE NEIGHBORHOOD

Recent efforts to connect the Greenway to the rest of the city, are underway in the form of a new Greenway plan. Quality public space with attractive amenities at key locations will also improve access, while art and cultural activities funded by community partners will contribute to neighborhood identity and make everyone feel welcome.

GETTING TO KEY DESTINATIONS

Greenway users often report feeling disoriented by their surroundings, especially in the areas below street level. A wayfinding system throughout the Greenway will help people know where they are going, and orient visitors to destinations, libraries, and community spaces. This system will include signage, map kiosks, and highly visible markers in a consistent color.

BICYCLIST AND PEDESTRIAN SAFETY

Survey respondents list that many connection challenges, Lake Street and the Greenway were crucial. This creates barriers for those who wish to avoid nearby streets. Some barriers proposed include upgrade of crosswalks (painting and re-paving), traffic calming and signal adjustments, vegetation management to increase visibility and safety, and new street lighting with improved lighting.

EXAMPLE DESIGN TREATMENTS

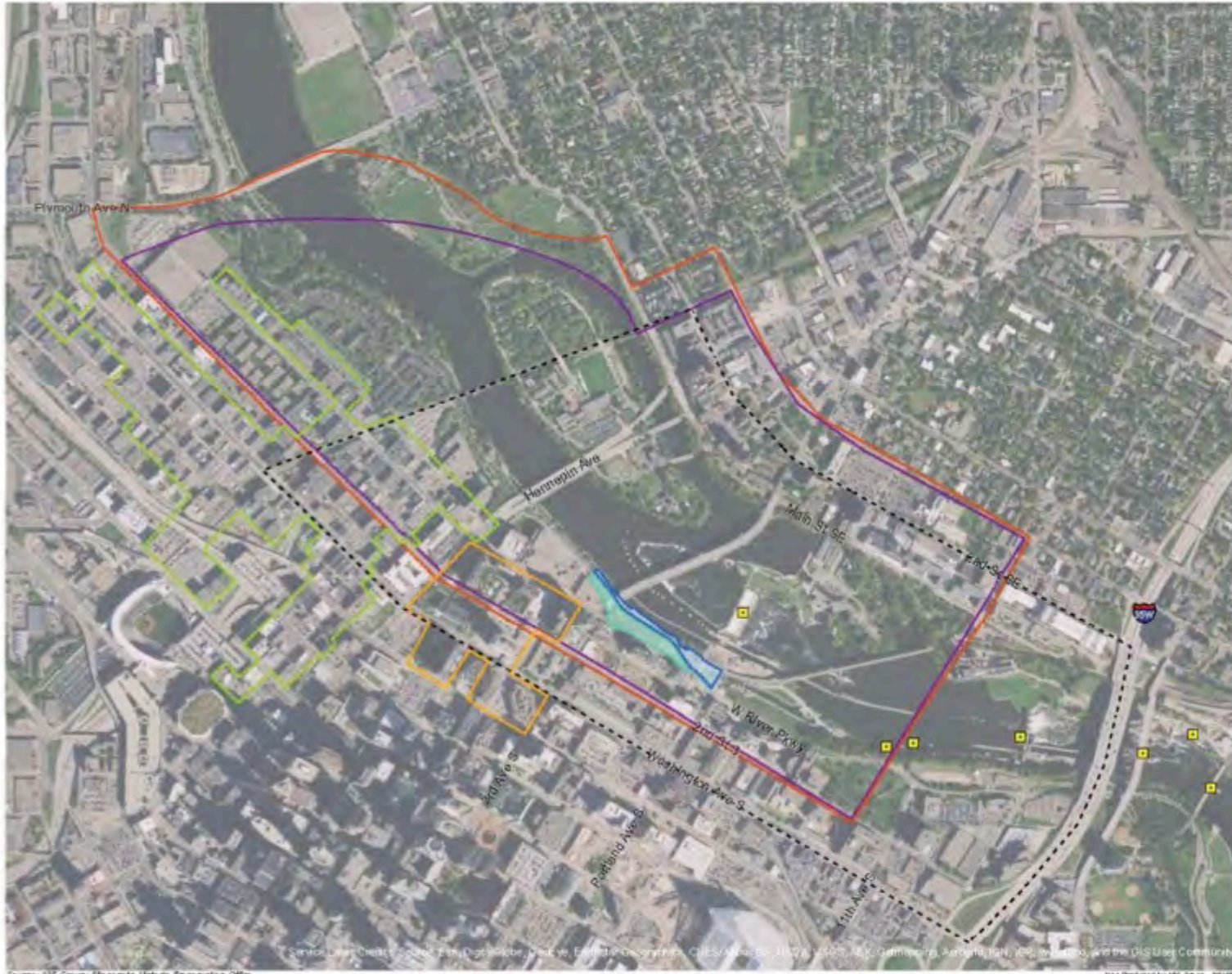


RECOMMENDED HIGHLIGHTS



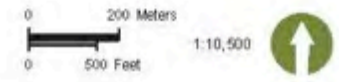
Water Works





**Water Works
Cultural Resources**
Minneapolis, Minnesota

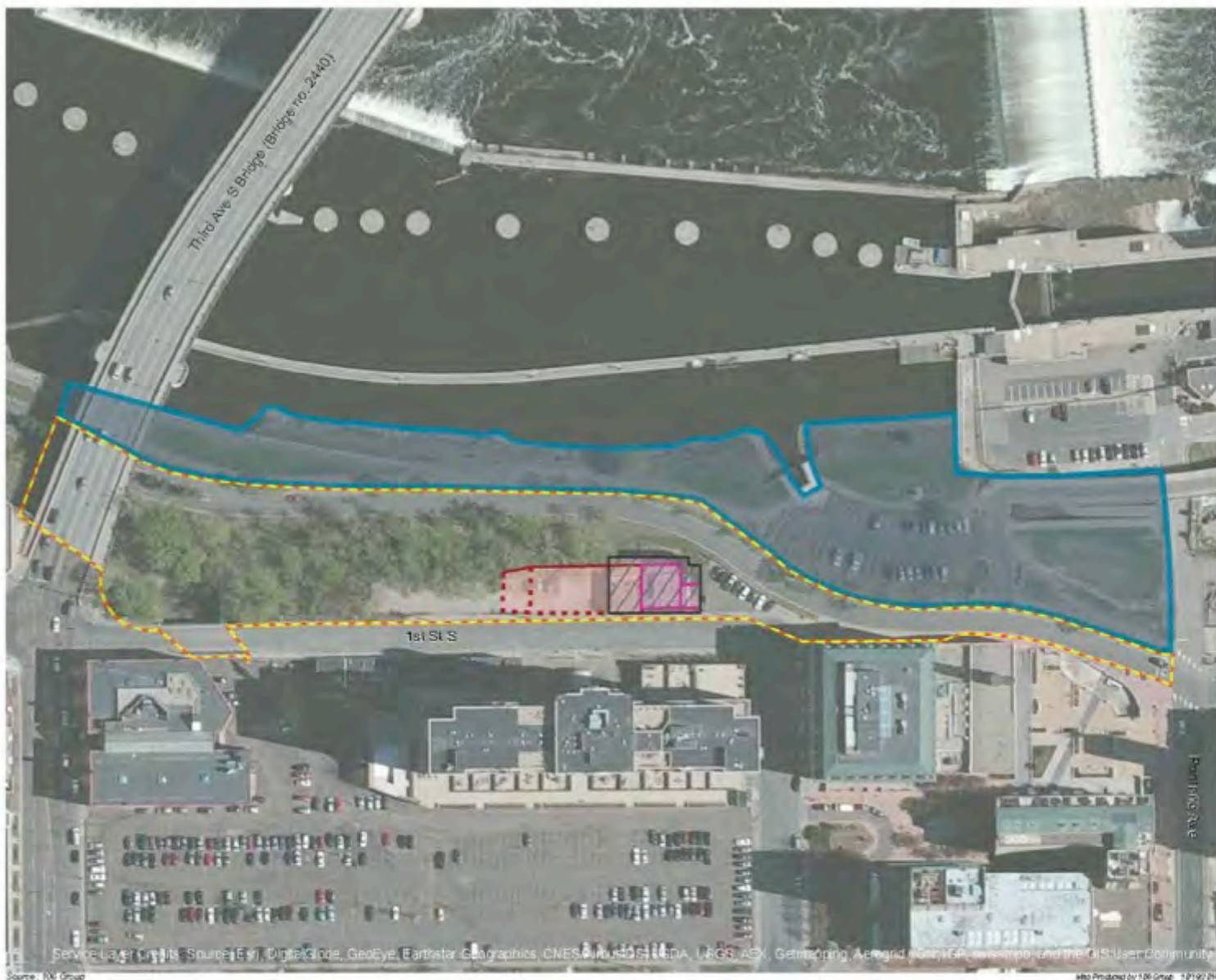
- ▭ Riverside Phase
- ▭ Mezzanine Phase
- Study Area
- Gateway Historic District (Potentially NRHP eligible)
- Minneapolis Warehouse Historic District (NRHP listed and locally designated)
- St. Anthony Falls Historic District (NRHP listed)
- St. Anthony Falls Historic District (Locally designated)
- St. Anthony Falls Locks and Dams Historic District (NRHP eligible) *This district is depicted by points because district boundaries are not available.









Water Works Study Area, Project Area, and NRHP-Listed and Eligible Districts within the Study Area

Figure 1

Source: 106 Group, Minnesota Historic Preservation Office. Map Produced by 106 Group 9/9/2016



**Water Works
Conditions Assessment**
Minneapolis, Minnesota

-  Mezzanine Phase
-  Riverside Phase
-  Columbia Flour Mill - Above Ground
-  Columbia Flour Mill - Subsurface
-  Fuji Ya Restaurant
-  Bassett's Second Sawmill Engine House

0 25 Meters
0 50 Feet
1:1,250



Locations of Above-Ground Historic Resources within the Mezzanine Phase

Figure 2

Service Layer Credits: Source: Esri, DigitalGlobe, GeoEye, Earthstar Geographics, CNES/Airbus DS, USDA, USGS, AeroGRID, IGN, and the GIS User Community
Map Produced by 106 Group 10/19/2014



1973). Four years later, Adams went on to help found the National Afro-American League with African American civil rights leaders Frederick McGhee and Booker T. Washington (Delton 2002).

The late 1850s and early 1860s were a tumultuous time for the residents of Minnesota, as a result of the high civilian (both white and Dakota) casualties during the U.S. Dakota War of 1862, the forced internment and removals of Dakota people that followed, and the Civil War which raged from 1861 - 1865 drawing large numbers of young men away from the newly formed state. Minnesota was the first state to offer troops, and had an unusually high volunteer rate in proportion to its population - 104 of these were African American men (MNHS 2016d) during a time when the 1860 U.S. Census listed a total population of 259 African Americans in Minnesota (Scott Publishing Company 1976, Taylor 2002).

3.3.2 INDUSTRY AND ORGANIZATION

The earliest industry of Minneapolis and St. Anthony was sawmilling, which first started in the 1820s with a government-owned gristmill and sawmill at the Falls, and then began operating in earnest in the 1860s. While there is occasional reference to African American men working in the lumber industry, including sawmilling, (Murphy and Gantz Murphy 2002), little documentation is available on the workers themselves. A few studies which explore the ethnicity of Minneapolis' early laborers in related industries lend some insights into demographics of the workforce. In Minneapolis, one of the early large-scale projects was the construction of a canal along the West Bank to allow water to flow to mills that were constructed along the shore. As water passed through the tunnel beneath each mill, it activated a series of turbines which moved the milling machinery. The men who labored on the West Side Waterpower Canal and its expansion in the 1850s and 1860s were largely white, mainly Irish, Scots, and New Englanders, who were later joined by Scandinavians, Germans, and a new wave of Irish immigrants, the majority of whom were single (Hess Roise 2003a, 2003b).



Figure 3 Portrait of unidentified man c. 1890, taken within two blocks of the Water Works project area (MNHS, #GT1.3f r48)

One possible explanation for the lack of an African American presence in sawmills and related laborer positions is that blacks do not appear to have migrated in large numbers to Minnesota during the 1850s and 1860s (Spangler 1961), and the black settlers who are known arrived with families and vocations, such as barbers and editors. In contrast, large numbers of single Europeans immigrants came

1966 Chronicle 5-24-1867

reported. The report was not visible to the naked eye, however.

→ **LO THE POOR INDIAN.**

The Remains of an Indian Chief Found in Minneapolis.

Our lively city was yesterday morning thrown into a state of excitement by the discovery of an Indian grave, in which were found the remains of a human being of gigantic dimensions. The skull was found on First street, while the body was discovered in a ditch which runs parallel to the river. The skull was in a good state of preservation, and was covered with a long, thick head of hair. With the remains were found an Indian silver medal, dated 1809, with the words James Madison, President of the United States, on one side, and on the other were the words "peace and friendship," with two hands clasped. There was also several fancy stone pipes of curious workmanship, feathers and an Indian knife resembling a large butcher knife, which, when exposed to the atmospheric influence, crumbled into dust. The vertebra, ribs and smaller bones were entirely gone, and nothing but the larger bones were in a good state of preservation. From the appearance of the bones, and the nature of the soil, he must have been buried some fifty years. His head was towards the setting of the sun. The grave was on the highest point of land that overlooks the Falls. From all the surroundings, he must have been a person of great importance, and was probably a chief of some tribe.

DECLINED.—The *Pioneer* says flour has declined in St. Paul from seven and a half dollars to \$6.50 per sack. Flour was selling here yesterday at the old rates—\$7 50. It won't do to let St. Paul get ahead of us. The *Pioneer* says potatoes are only worth \$1 40 per bushel, while they are worth \$2 here; eggs are only worth 18 cents per dozen there, while they sell in this city for 20 cents. We shall have to draw on St. Paul if prices keep up.

HORACE GREELEY SAYS.—Greely, in his recent speech at St. Anthony, says the best water on this continent is the Falls of St. Anthony. Ay, and this water power is what is going to build up two great cities at the Falls of St. Anthony.

RARE FUN.—Fine sport may be expected this-afternoon, commencing at 2 o'clock, down on the prairie by Mr. Cornell's. The celebrated and veteran North Star Club of St. Paul, will meet our new organized Minneapolis Club. "When greek meets greek then comes the tug of war." Both ball clubs will do their best.

IN NEW YORK.—By a private letter from New York, under date of the 16th of this month, we learn that the Falls were represented at the Minnesota head quarters, in that city, by Hon. R. J. Baldwin and lady, Hon. J. S. Pillsbury, Wm. S. King and J. E. Bell. The latter gentleman has returned to his Minneapolis home.

BY DAY AND NIGHT.—We are pleased to learn that most of the mills are now running by night and day.—The wood teams are becoming plenty, while the great lumber wagons are as thick as grasshoppers. We may look for lively times ahead.

saw yesterday a sol bloom. This is the season, as far as Twelve years ago May plum trees over the State. N day of May and bloom. Some diff sons.

IN GOOD TIME.—some three months has been made an efficient fire this will be done I not doubt, but 'w part of Washington Helen and Nicoll should break out.

FENCING IN.—some three months has been made an efficient fire this will be done I not doubt, but 'w part of Washington Helen and Nicoll should break out.

PERSONAL.—We learn that Dr. Scohaminent physicia. in the city, and pr their future home. gentlemen will pr sion in the city.

THE PEOPLE'S ped into the Peop and found them al immense stock of They are rather la of their goods, but find a market for t

REGULAR AS A C on the Minnebotu ning as regular as This road is most der, and we expect pays to keep it so.

MUSICAL UNION Hall of the Soci c'clock.

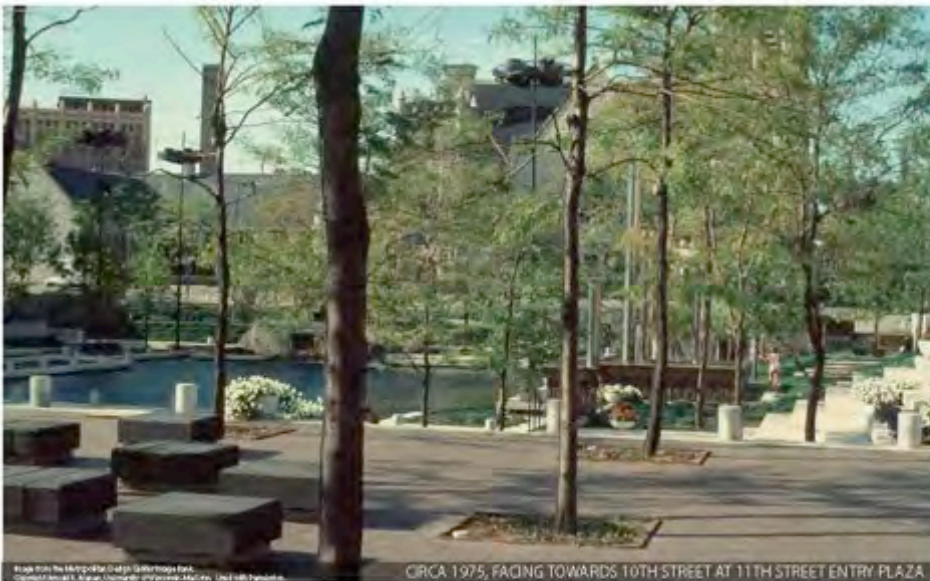
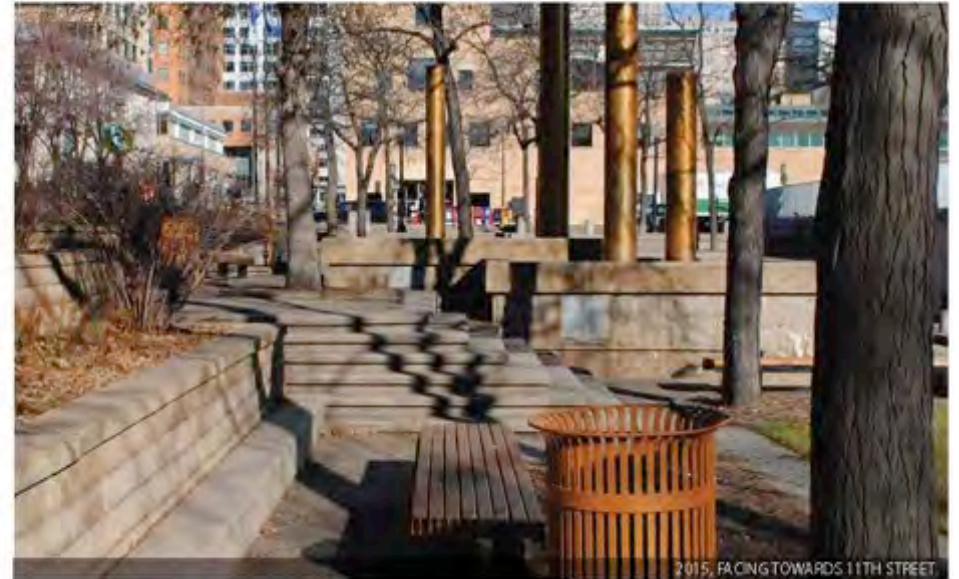
Peavey Plaza







TIME COMPARISON PHOTOS



PEAVEY PARK PLAZA CITY OF MINNEAPOLIS

12.08.2015 **DAMON FARBER ASSOCIATES**

855

854

853

852

850

849

848

847

846

845

844

843

842

841

840

839

lower
nicollet
terrace
844.3

upper nicollet
terrace 848.1

mid nicollet
terrace 846.4

fountain level
842.4

lower
level
842.4

upper
level
849

street
level
851

upper 12th
terrace 848.4

basin level
840.3

lower 12th
terrace 845.4

mid 12th
terrace
847.4

east level
844.3





Thank you and Questions



Send Comments to:
peter@peterhendeebrown.com