

# PERSPECTIVE

## PERFORMANCE FABRIC



- Colour Range 6
- Fabric Width 3.00m (118")
- Fabric composition 75% PVC, 25% Polyester
- Openness 3%

# A21

S060601-15-Pe

## SOLAR, OPTICAL & COLOUR FASTNESS PROPERTIES

### PERSPECTIVE

	SOLAR			OPTICAL			SC	CF	DIM out	UV block	G TOT			
	T <sub>s</sub>	R <sub>s</sub>	A <sub>s</sub>	T <sub>o</sub>	R <sub>o</sub>	A <sub>o</sub>					SG	DG	TG	DG LE
Arctic White	21	69	10	17	83	0	0.33	6	2	94	0.26	0.28	0.29	0.33
Desert Sand	20	59	21	15	68	17	0.43	6	3	95	0.31	0.32	0.35	0.41
Tuscan Beige	21	62	17	17	73	10	0.40	6	2	95	0.31	0.32	0.33	0.37
Windspray Grey	18	53	29	14	60	26	0.49	6+	3	94	0.36	0.37	0.38	0.42
Shale Grey	14	44	42	9	51	40	0.57	6	3	95	0.39	0.41	0.42	0.45
Black Iron	3	10	87	4	6	90	0.90	6	3	95	0.59	0.59	0.60	0.61

T: % Transmittance  
R: % Reflectance  
A: % Absorption  
SC: Shading Co-efficient

CF: Colour Fastness  
Dim out: 1= High light penetration  
4= Low light penetration  
5= Blackout

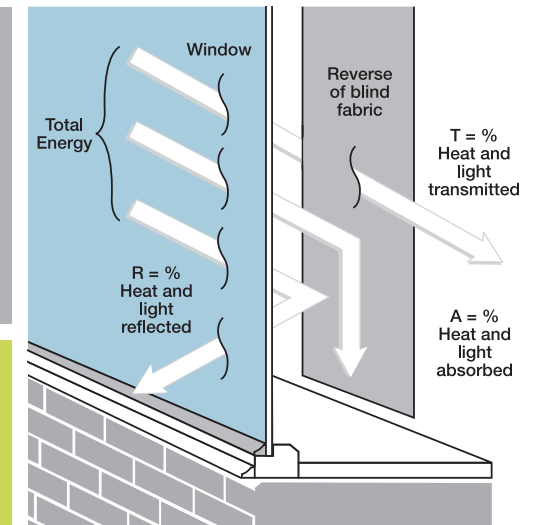
UV Block: the percentage of UV light blocked by the fabric  
GTOT: SG = Single Glazed, DG = Double Glazed, TG = Triple Glazed,  
DG LE = Double Glazed Low Emissivity.

#### SHADING CO-EFFICIENT

The solar heat gain with the blind at the window divided by the solar heat gain with no blind at the window. The lower the shading co-efficient, therefore, the higher the efficiency of the fabric. The test results in the table above have been achieved using a single 6mm glass glazing system.

#### G TOT

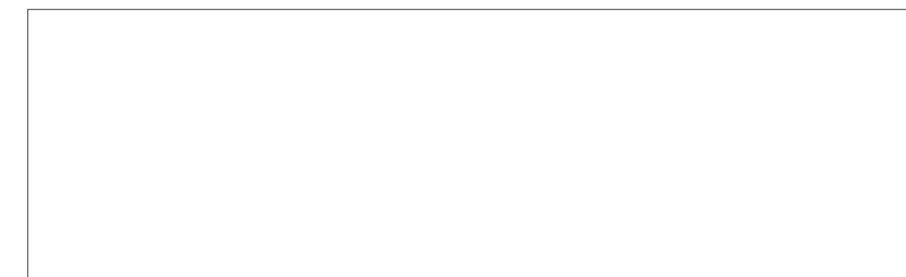
A measure of total solar energy that passes through the glazing system and the blind fabric.



#### FIRE PROTECTION

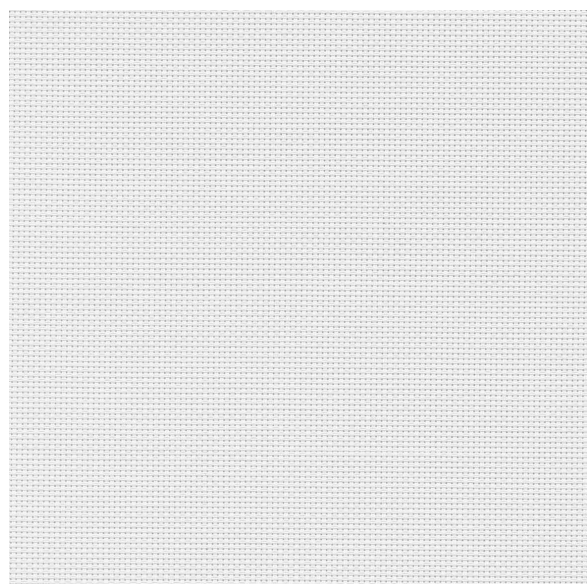
Perspective meets FR standard BS 5867 Part 2 Type B. Further information is available on request.

BLINDS WITH LOUVOLITE® PERFORMANCE FABRICS SUPPLIED BY:

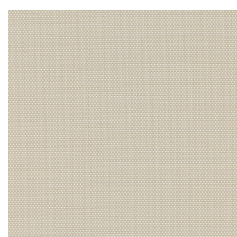


CI/SfB 1976 reference by SfB Agency		
(76.7)	X	

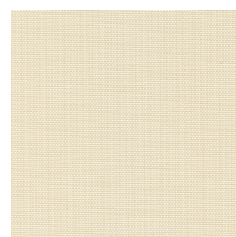




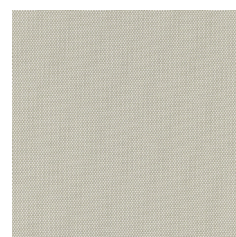
Arctic White



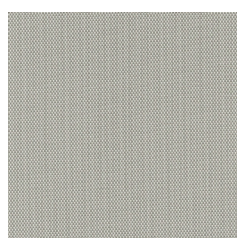
Desert Sand



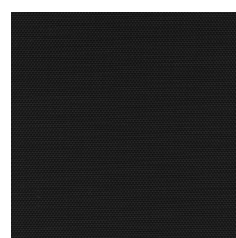
Tuscan Beige



Windspray Grey



Shale Grey




Black Iron

# PERSPECTIVE

PERFORMANCE FABRIC



Available for	Roller   Roman   Panel
Fabric Composition	75% PVC, 25% Polyester
Fabric Width	3.00m (118")
Openness	3% Openness factors are for guidance only. For comprehensive performance data please refer to Louvolite for solar and optical figures.
Fabric Weight	460g/m <sup>2</sup> (13.6oz/yd <sup>2</sup> )
Flammability Standards	Complies with BS 5867 (Part 2, Type B)
Colour Fastness	Tested in accordance with BS EN ISO 105-B01:1999
Greenshield	Fabrics featuring the Greenshield mark have been tested to confirm no harmful VOC's or hazardous substances will be released to the environment in quantities that are recognised as potentially dangerous to occupants of dwellings or buildings.
Cleaning	See manufacturer's instructions Tested in accordance with BS EN 26330:1994 method 7a
Availability	Ex-stock
Fabric Samples	Available on request

-  Flame Retardant
-  Dimout
-  Wipe Clean
-  Greenshield