



CATHOLIC WELFARE SERVICES

62 YEARS OF SERVICE TO THE POOR

Dedicated to the Preciousness and Dignity of Life | Journeying with Those in Need to Live Life to the Fullest



About Catholic Welfare Services (CWS)

Founded in 1959, Catholic Welfare Services (CWS) is a social service organisation that supports those most in need.

Over the years, CWS has grown to become an Action Arm of the Catholic Church of Singapore, initiating, assisting, coordinating and carrying out social services to alleviate poverty and distress among the people of Singapore, regardless of race or creed.



Our Mission

Catholic Welfare Services is dedicated to the
Preciousness and Dignity of Life.

We journey with people-in-need to live life
to the fullest.

Our Aims & Objectives

- A. To enhance and uphold the dignity of the human person at all times, bearing in mind how the dignity of all persons is realized and expressed in social and economic structures.
- B. To initiate, assist and organize such forms of relief and schemes of social service which would alleviate poverty and distress amongst the people of Singapore irrespective of their race or religion.



Our Aims & Objectives

C. To provide, with the prior written approval of the relevant authorities, high-quality direct services by initiating, operating, managing and evaluating programmes and/or institutions catering to:

- Children
- Youth
- Elderly
- The Sick and Aged Sick
- Any other needy persons in Singapore
- Families
- Ex-prisoners



Our Aims & Objectives

- D. To liaise with other Catholic, social, welfare and community organizations and Singapore government organizations in order to provide the best possible care to the marginalized.
- E. To initiate programmes that will create employment and generate income that will contribute towards the self-sufficiency of the needy.



From humble beginnings

CWS was formed in 1959 as a charity to address the needs of the vulnerable in the community. Like most other non-profits of the time, CWS initially focused on providing food and supplies through initiatives such as the Breadline/Indigents' Diner programme for the needy and destitute in the community.

CWS was one of the first organisations to respond to the Bukit Ho Swee fire in 1961, providing food and supplies to aid the victims.

In 1962, CWS branched out its programmes and services by launching the Rose Villa shelter for unmarried mothers, in collaboration with the Good Shepherd Sisters.



Widening our services

In line with the national goal of driving education and literacy within the community, in 1963 CWS launched the Study Scholarship Fund to provide aid to well-performing students from difficult financial backgrounds. In the years that followed, CWS also launched a number of welfare centres across Singapore, such as the Marantha Centre in Queenstown, the Catholic Welfare Rest Home, and CWS Social and Welfare Centres in Jalan Kayu and Tuas Village.



Expansion and growth

CWS continued to launch a variety of innovative programmes and services to support the community, such as its Free Library Service at Mt. Alvernia Hospital, a Mobile Clinic for rural areas, Vocational Training Centres for youths, and the Catholic Welfare Transit Home for underprivileged boys.

In 1972, CWS was officially registered as a member of Caritas Internationalis, an international confederation based in Rome that has over 160 member Catholic organisations.





Supporting the Elderly

In 1978, in response to the needs of an ageing society, CWS would make its first venture in the eldercare sector. With the support of the Cannosian Sisters, CWS launched **St Joseph's Home**, a residential nursing home facility for the elderly. CWS would go on to acquire two more nursing homes - **Villa Francis Home for the Aged** in 2001, and **St Theresa's Home** in 2003.

In 1979, in collaboration with the Society of St Vincent de Paul, CWS would set up **St Vincent Home** - a community home for the destitute elderly in need of a place to stay.

Evolving Needs of the Community

Over the years, CWS has endeavoured to continually assess and redefine its programmes and services to meet the evolving needs of the community. From scholarship funds to eldercare initiatives, CWS has expanded its services to include programmes for rough sleepers, persons with intellectual challenges and emergency shelters. We have also embarked on a number of collaborative initiatives with organisations such as CWS-BT Youthreach with BoysTown Singapore.



Evolving Needs of the Community

1982 – 2007: CWS was the implementing partner for the UNHCR for the care of Vietnamese refugees

1985: CWS collaborated with the Missionaries of Charities Sisters for the formation of the Gift of Love Home for the destitute in Singapore.

2000: CWS helped launch the Marine Parade Family Service Centre (in collab. with South East CDC and the Brothers of St Gabriel).

2008: CWS handed over funding of projects such as Family Life Society, Morningstar Community Services, and Catholic Aids Response Effort to CSCC, the newly- formed enabling body for Catholic charities



Fundraising at CWS

In 1961, in order to expand its programmes and services, CWS conducted its first ever Charities Week, drawing in donations from parishioners of Catholic churches and members of the public alike.

Conducted during the 40-day period of Lent, Charities Week became CWS' annual flagship fundraising event until 2007, when the Catholic Social and Community Council (now Caritas Singapore) took over the mantle.



Fundraising at CWS

CWS also conducts an annual Donation Draw in aid of the poor and social & education development projects.

Appeals to Corporations and Individuals

Online Fundraising

Catholic Welfare Services is largely dependent on public donations for its operations.



Why We Raise Funds

CWS is largely dependent on public donations to fund its operations. In addition to our welfare programmes, we operate 3 Nursing Homes for the elderly. 90% of the residents from these Homes are subvented clients, subsidised by MOH for up to 75% of costs (depending on Means Testing). If a resident is unable to pay the remaining 25%, CWS absorbs the costs (\$1.77m in FY18/19 and \$1.2m in FY19/20). Only 10% of our beds are for private residents (able to pay full costs).

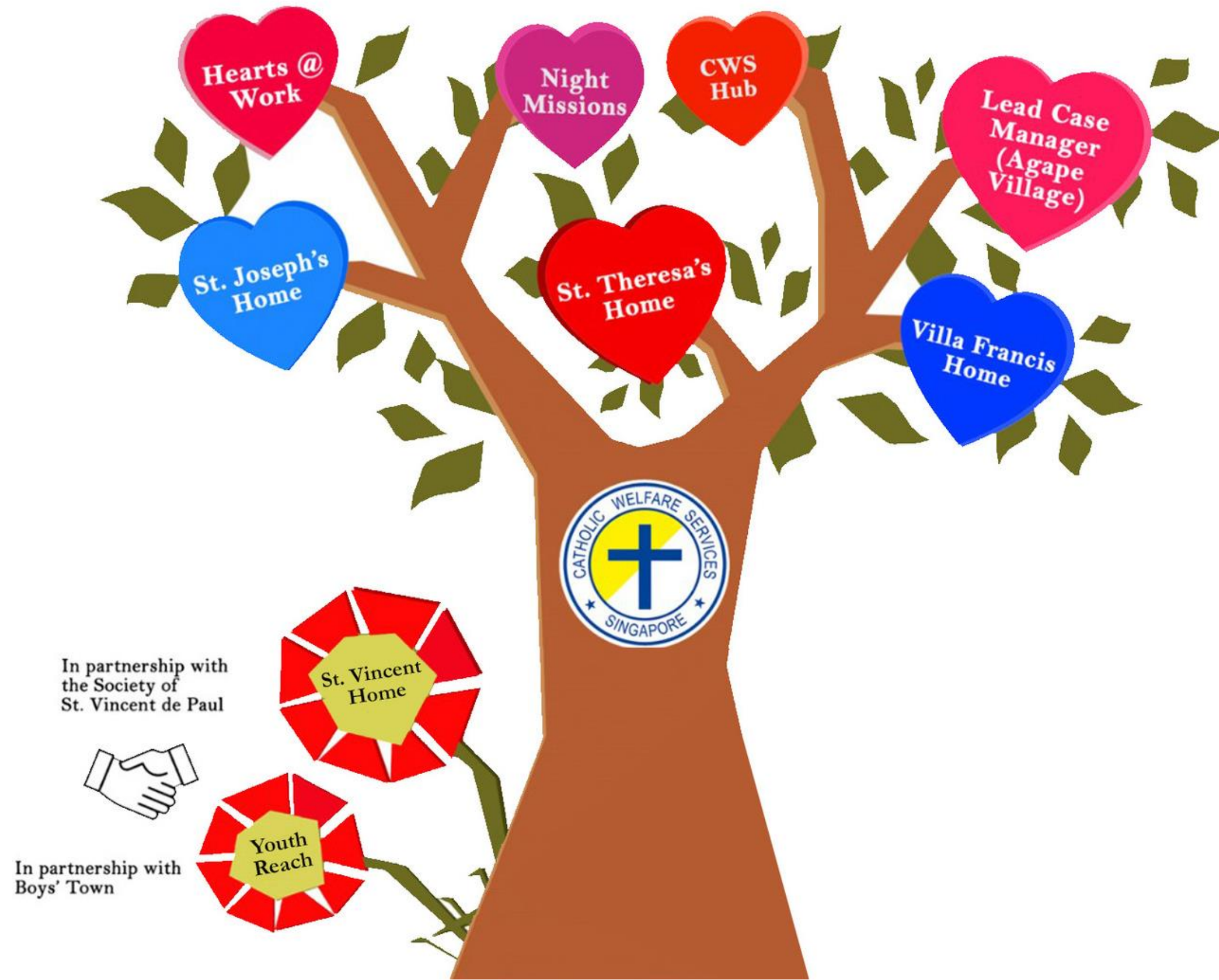


New Approaches for the New Day

In recent years, CWS has embarked a variety of new fundraising endeavours, seeking to more directly connect with donors and showcase to them the fruits of their contributions. In 2017 and 2018, we organised two charity Walkathons, which saw donors and volunteers coming forward and taking residents from the three nursing homes on a leisurely wheelchair stroll around Labrador Park and Marina Bay respectively.



THE CWS FAMILY TREE



St Joseph's Home

- Set up by Catholic Welfare Services in collaboration with the Canossian Sisters in 1978
- Services include Hospice Care, Dementia Care, Assisted Living and Infant & Childcare
- Pastoral Care with a Philosophy *"Nobody Dies Alone"*
- Total Nursing Bed Capacity: 412
- Total Childcare Capacity: 56
- Approx. Annual Expenditure: \$14.7mil





Villa Francis Home for the Aged

- Set up in 1973 by the Franciscan Missionaries of Divine Motherhood (F.M.D.M) Sisters
- CWS took over management in 2001
- Relocated from Mandai estate to Yishun in 2013
- Transitional Care Facility for residents needing longer and/or more intensive rehab services
- Total Bed Capacity: 240
- Approx. Annual Expenditure: \$6 mil



St Theresa's Home

- Established in 1935 and managed by the Little Sisters of the Poor
- CWS took over management of the Home in 2003
- Pastoral care is provided by the Missionaries of Charity
- First of the 7 Nursing Homes in Singapore to embark on Advanced Care Planning for residents
- Total Nursing Bed Capacity: 200
- Approx. Annual Expenditure: \$5.5mil

Hearts@Work

Hearts@Work is an empowerment programme for persons with intellectual challenges, aimed at providing them with continuous development support towards achieving greater independence and self-sufficiency.

The programme is targeted at high-functioning adults between 19 to 35 years of age, and provides them training in vocational and work skills to raise their future employability. It also provides them with an opportunity to develop and hone their social skills, helping them more smoothly integrate into the wider community.



St Vincent Home

Set up in 1979 in collaboration with the Society of St Vincent de Paul, St Vincent Home (SVH) is a shelter home that provides long-term housing and accommodations for elderly residents on the Public Assistance Scheme.

SVH endeavours to enhance residents' quality of life and help them maintain agency, independence, and dignity. Residents have the freedom of managing their own activities of daily life as far as possible, and play an active part in the upkeep and maintenance of the home.





CWS BT-YouthReach

A collaborative initiative with Boys' Town Singapore, CWS BT-YouthReach is an outreach programme in support of at-risk girls and boys between 10 to 24 in the Tampinese and Toa Payoh communities. The programme is aimed at developing the youths' skills and abilities through counselling, mentoring and life-skills workshops, with the ultimate goal of helping them reach their fullest potential.

Each year, the programme engages with an average of 400 new youths through outreach activities, interest-based programmes, and referrals for counselling and case management.



The CWS Hub

The CWS Hub serves as the headquarters for our social workers, and functions as a meeting place where they can engage with clients and other stakeholders. The Hub also functions as a respite area for clients to rest and relax, with amenities such as computer stations and a lounge area. Our Social Workers primarily work with our clients and community stakeholders through a collaborative framework to facilitate shift in mindset of the client to work towards his/her path to self-sufficiency.

In view of the pandemic, access to the Hub has been temporarily limited to appointment based visits for essential purposes.

Social Work at CWS

CWS operates a number of programmes to support the less fortunate in the community. These include food relief programmes, scholarship aid for students and families facing financial difficulties, and counselling services for those in need.

In FY 2020, CWS supported 24 families and an additional 32 individual students through our scholarship aid programme. In the same period, we handled a total of 305 social work cases, 166 of which were new, and 194 of which were closed or referred out to other agencies.





Lead Caseworker Agape Village

Established in 2015 by Caritas Singapore, Agape Village (AV) operates as a hub for social services in the Toa Payoh community, providing a one-stop solution for individuals and families to find the social assistance and support they need. CWS is privileged to serve as the Lead Case Manager for AV, acting as the first point of contact for beneficiaries and coordinating care services between the various organisations and agencies.

Emmanuel Second Chance Education (ESCE) Programme

Launched in 2020, the Emmanuel Second Chance Education (“ESCE”) Programme is a unique scholarship and mentorship programme for individuals in need of a second chance at building a better future for themselves and their loved ones.

With no bond, age limits or restrictions on the course of study, successful applicants will receive not only financial assistance but will also be assigned a career mentor who will provide support and guidance.



The Night Missions

The Night Missions Programme was launched in 2014 to reach out to the rising number of rough sleepers in the community and provide them with the support that they need.

Every Friday night, staff and volunteers head out into the streets to seek out rough sleepers, distributing food, drink and essential items such as jackets and blankets, and engaging with them in simple conversation.

These interactions also provide an opportunity to learn about the unique needs of each rough sleeper, and allow us to link them up with the appropriate interventions wherever possible.





An Initiative By CWS

The Night Missions

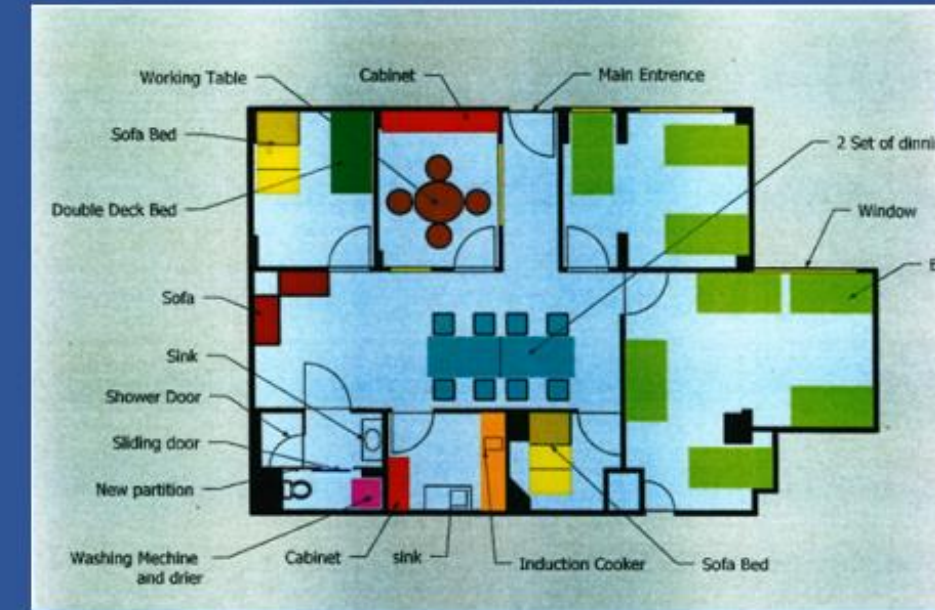
Est. Since 30th May 2014



What makes us different...



Designated social worker on standby to answer calls from volunteers who encounter rough sleepers



*expected to open in Sep 21

With the guiding principals of respect and dignity of life, we provide holistic support to those we encounter.

Model of Care

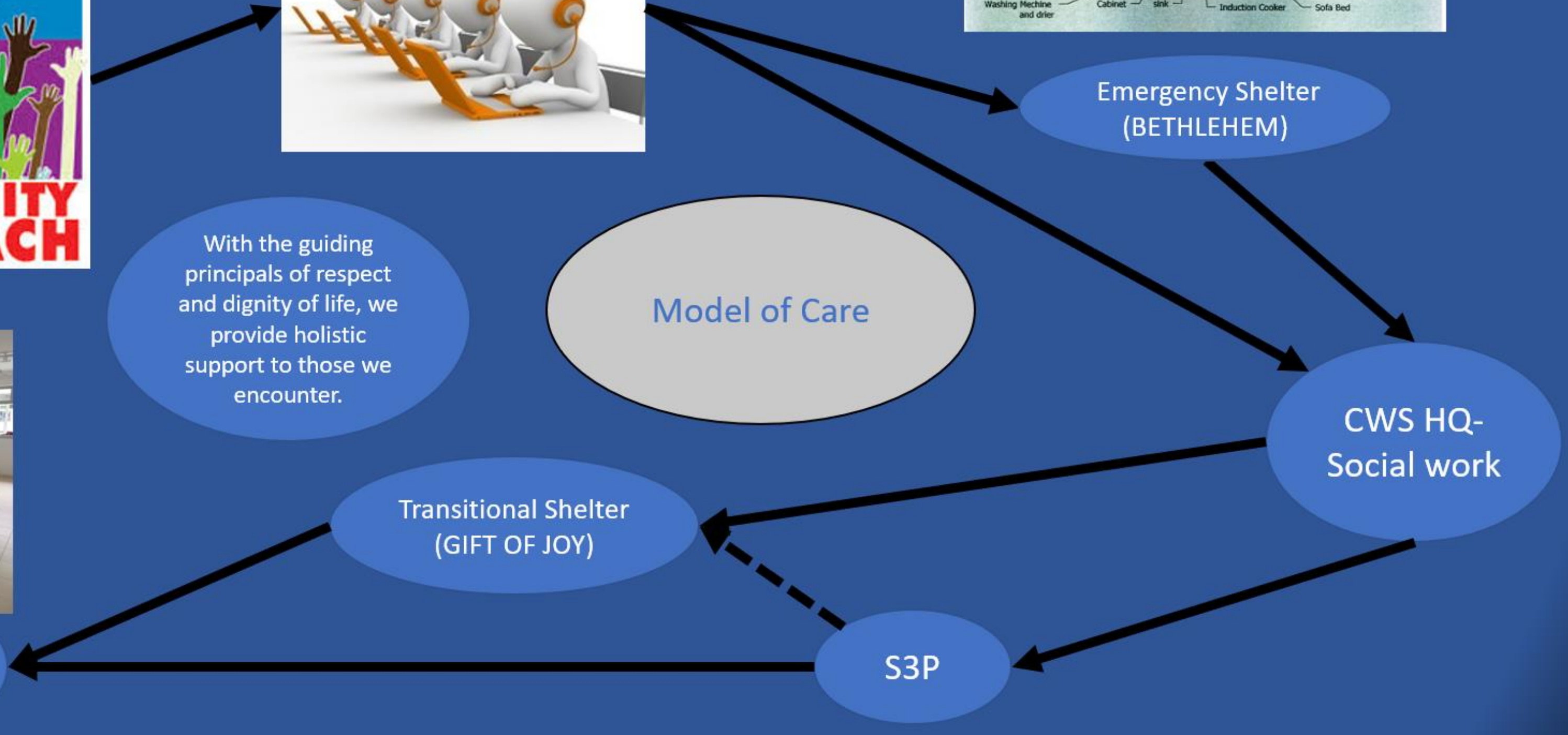
Emergency Shelter (BETHLEHEM)

CWS HQ- Social work

Transitional Shelter (GIFT OF JOY)

S3P

Permanent Housing





Prinsep Café *Exquisite*



**Providing a fine dining
experience
7 days a week**

**Weekdays: 730-900pm
Weekends: 600-800pm**



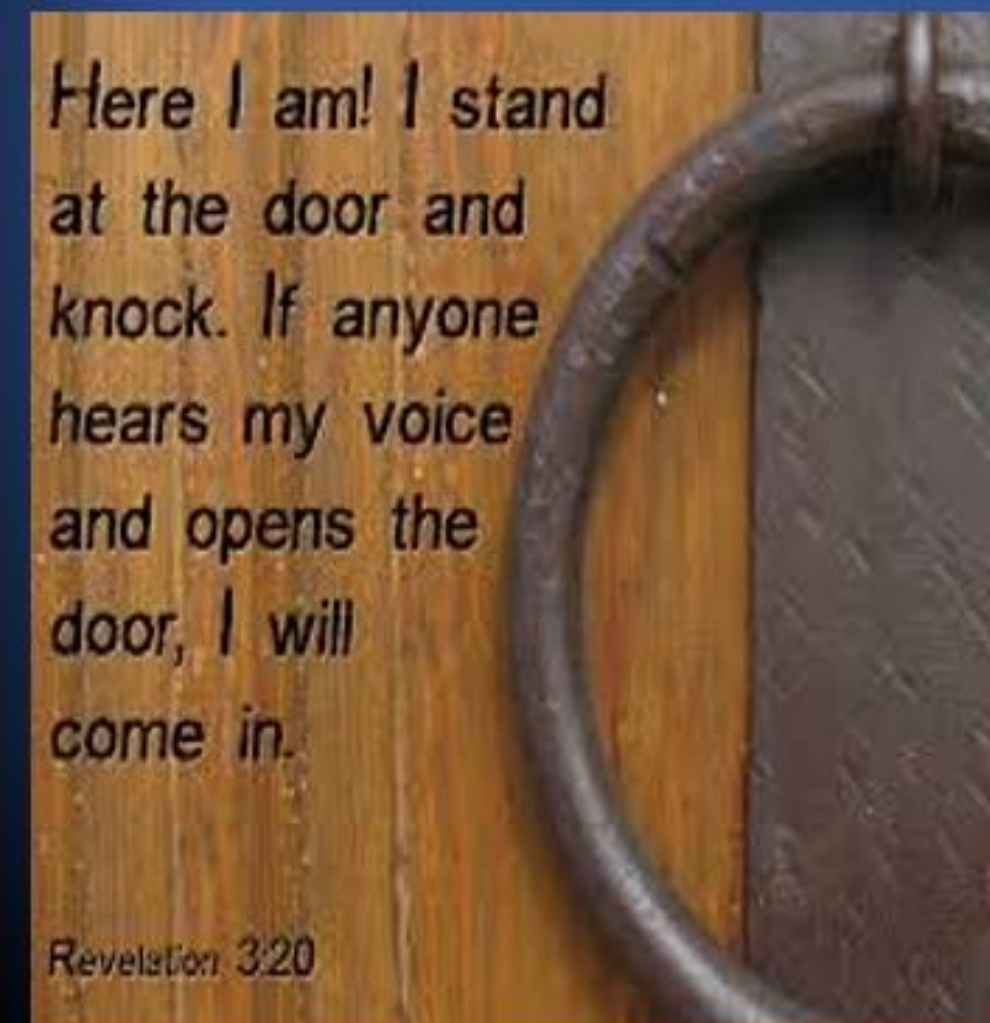


Community of Love

The night shelter creates a strong safety net for the least, the last and the lost in our community.

The 5 Night Shelters

1. **AMK Christ the king**
2. **Bukit Batok (SMOTA)**
3. **Prinsep Street Presbyterian Church**
4. **Toa Payoh Methodist**
5. **Punggol Gospel Light(Female)**



Current Night shelter arrangements



Number of clients
we are able to
provide shelter for
20* and counting



*due to safe distancing
measures

*“If you judge people,
you have no time
to **love them.**”*

~Mother Teresa



A WORD FROM OUR VOLUNTEERS

Q & A

Contact Us



For more information,
visit our website at:

www.catholicwelfare.org.sg

Or email us at:

generalenquiries@catholicwelfare.org.sg

