

Hotel-roomsets

BOUTIQUE RANGE – FURNITURE & SOFT FURNISHINGS

The Boutique Range exclusively available from Hotel-Roomsets has been designed with the 4-5 star hotel markets in mind, creating an individual and luxurious experience whilst offering great value for money. The range has been custom-designed taking into account the major issues of practicality, maintenance and exclusivity that are the key requirements of this sector.

This is a new concept supplying the right product at the right time and includes the following benefits:

- No design or procurement fees
- Cost benefit from volume purchasing
- Top commercial quality FF&E
- 'Limited Edition' - only 500 rooms per range



Boutique Range
from £6,950 + VAT per roomset
Based on a minimum order of 50no. roomsets
(price includes carpet, furniture, lighting and all soft goods and make up)

Contact Us
www.jdinterior.solutions
info@jdinteriorsolutions.co.uk
+44 (0) 1733 309 498



WORKING IN
PARTNERSHIP
WITH



Hotel-roomsets

Desk Chair

Contemporary office-style chair with high-back upholstered seat, black castors suitable for use on carpet. Upholstered in hard-wearing vinyl.



W700, H1070, D650, SH460-650

Desk

Slab-end style desk with central glass insert and single drawer. Optional pop-up panel for concealed media hub available on request.



W1300, H750, D500

Oval Mirror

Veneered oval frame with 6mm toughened mirror glass. Supplied with keyhole fixings.



W1100, H600, D50

Credenza

Eye-shaped credenza with polished stainless steel details. Can be used to house minibar or alternatively can be modified as a 6-drawer unit.



W1840, H750, D560

Hotel-roomsets

Armchair

Curved armchair with false seat cushion, fully upholstered in a contract-quality cut-velvet fabric.



Ø835, H1000

Occasional Table

Classic bentwood occasional table with 10mm toughened clear glass top and brushed stainless steel fixing plate.



Ø600, H760

Full Length Mirror

Wood veneer frame with 6mm toughened mirror glass. Split baton fixing top and heel support.



W650, H1900 D75

Floor Lamp

Floor lamp with wooden base and cream linen eye-shaped shade. Supplied with UK plug fitting as standard.



Base: W360, D250, H1450
Shade: W550, D320, H300
Overall Height 1710

Hotel-roomsets

Headboard

A striking headboard with an integrated ceiling light, which is concealed by an inverted tent-like structure, creating a warm glow in a very unique design. Note: The light fitting can be removed if a simpler headboard design is preferred. A customisable back panel incorporates a digitally-printed wallcovering of an image of your choice and two wall-mounted readings lights are included.



Queen Size Bed
W2270, H1750, D2150

King Size / Zip and Link Bed
W2530, H1750, D2150

Bed Base

Sleek timber bed base with wooden slats and upholstered headboard, available as queen-size, king-size or single / twin beds.



Queen Size Bed
W1500, H350, L2000

King Size Bed
W1800, H350, L2000

Twin Bed
W900, H350, L2000

Hotel-roomsets

Nightstand

Freestanding wood veneered nightstand to fit beneath the wood panel of the headboard.



W350, H520, D250

Desk Lamp

Satin chrome desk lamp with rotating head for ease of use to create directional task lighting. Supplied with UK plug fitting as standard.



W180, H450, D385

Framed Artwork

Contemporary abstract artwork framed in dark wood, security fixings included.



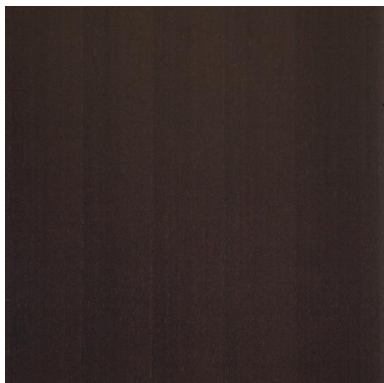
W1100, H1500

Note: All dimensions shown in mm

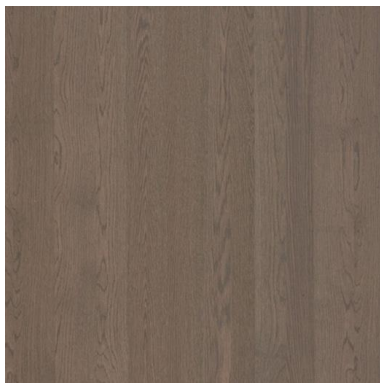
Hotel-roomsets

Finishes

Examples of the wood finishes and wallcovering are shown below.



Dark Oak

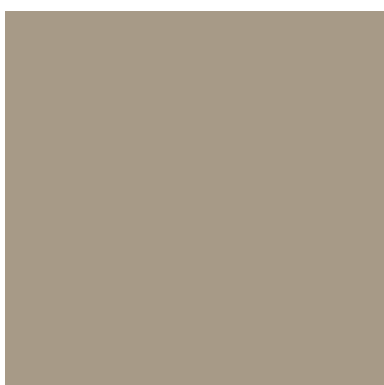


Contrasting Warm Grey Oak



Wallcovering

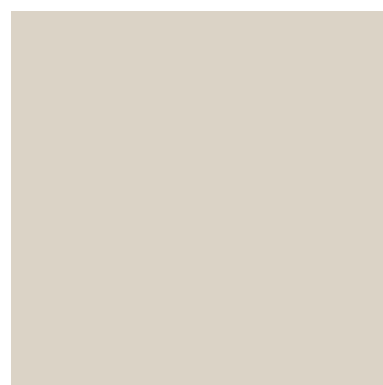
Recommended Paint Colours



Walls

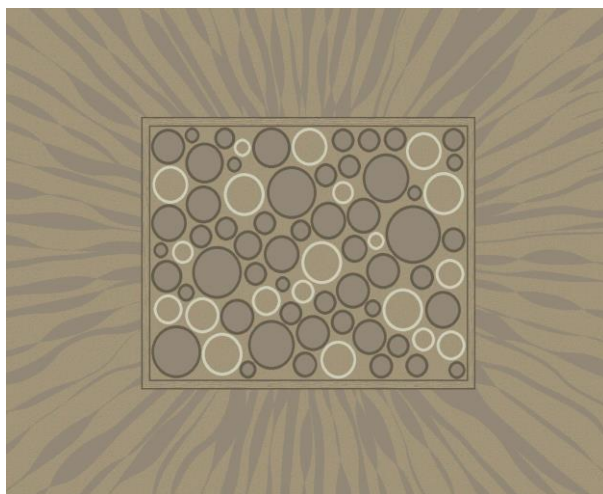


Ceiling



Skirting

Custom Colourtec Area Rug Effect Carpet

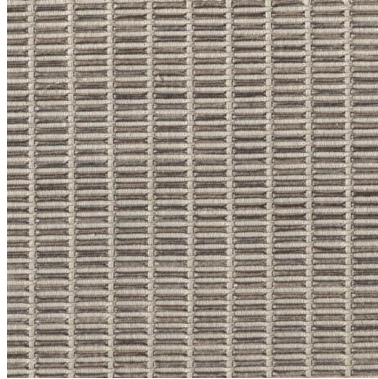


Hotel-roomsets

Upholstery Fabrics



Armchair/sofa or Chaise



Headboard



Desk Chair

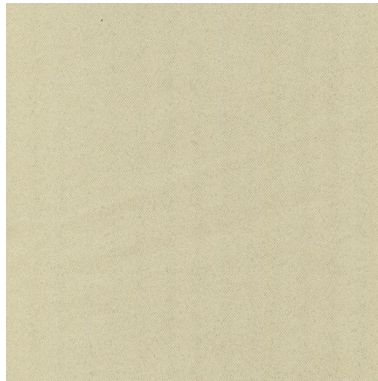
Note:

All upholstery fabrics meet Contract specifications (+40,000 Martindale rubs) and FR requirements (BS5852 part 2 (1990): ignition source 5 (Crib 5)).

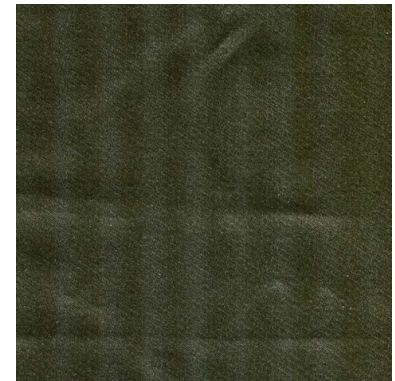
Soft Furnishings



Sheers



Dim-out Curtain



2no. Cushion
(700mm x 350mm)

One set of sheers, full width of the window wall, based on a size of 3.6m (w) x 2.4m (h) & track

One set of dim-out curtains to cover window, based on a size of 2.0m (w) x 2.4m (h) & track
(other size curtains available subject to on-site survey)

All fabrics for curtains are suitable for Contract use and meet FR requirements (BS5867 part 2 (1980): type B Clause 4.1 (Contract Curtaining)).

Hotel-roomsets

Soft Furnishings – Bed Throw



Face side of bed throw



Reverse-side and border on face side of bed throw

All fabrics for bed throws are suitable for Contract use and meet FR requirements (BS7175 section 3 (1989): ignition source 5).
Dimensions: 2.4m wide x 1.4m long (based on a queen-size bed).

Additional or Optional Furniture

Chaise



This stylish chaise replaces the armchair and gives the room a more boutique flavour. It is upholstered in the same fabric as the chair.

Sofa



The sofa is designed to coordinate with the armchair for large rooms and suites and would have a different upholstery in this case. Otherwise it can stand alone as shown.

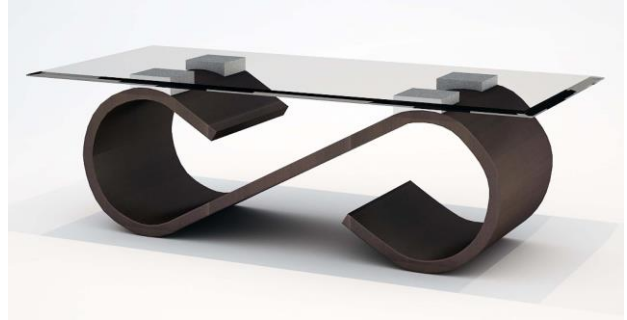
Hotel-roomsets

Alternative Desk Chair



We offer the choice of a more contemporary desk chair more suited to a business desk, or that shown above where the desk is more used as a dressing table.

Coffee Table



The coffee table is designed to work with the occasional table and is made from matching woods, metal fixing and safety glass top.

Freestanding Wardrobe



The freestanding wardrobe is elegant and functional. It is regarded as an additional furniture item because many guestrooms come with built in wardrobes. This unit has swing doors, hanging rail and an additional double drawer. It can be fitted out to include shelving for clothes and a safe.