

Hotel-roomsets

CLASSIC RANGE – FURNITURE & SOFT FURNISHINGS

The Classic Range exclusively available from Hotel-Roomsets has been designed with the 3-4 star hotel market in mind, creating a comfortable and stylish look, whilst offering great value for money. The range has been custom-designed taking into account the major issues of practicality, maintenance and comfort that are the key requirements of this sector.

This is a new concept supplying the right product at the right time and includes the following benefits:

- No design or procurement fees
- Cost benefit from volume purchasing
- Top commercial quality FF&E
- 'Limited Edition' - only 500 rooms per range



Classic Range
from £3,950 + VAT per roomset
Based on a minimum order of 50no. roomsets
(price includes furniture, carpet, lighting and all soft goods and make up)

Contact Us
www.jdinterior.solutions
info@jdinteriorsolutions.co.uk
+44 (0) 1733 309 498



WORKING IN
PARTNERSHIP
WITH



Hotel-roomsets

Desk Chair

Stylish chair with upholstered seat and walnut wood finish designed to be used for either working or dining at desk / dressing table.



W450, H840, D570, SH460

Mirror

Full length mirror with a walnut wood veneer frame, supplied with keyhole fixings.



W600, H1500, D25

Occasional Table

The round occasional table has a burled oak veneer top with plain walnut central pedestal base.



Ø600, H680

Lounge Chair

The lounge chair has a walnut frame with a contrasting textured neutral fabric, which is also present on the back of the chair.



W590, H785, D700, SH420

Hotel-roomsets

Floor Lamp

Floor lamp with walnut base, matt aluminium stand and linen shade. Supplied with UK plug fitting as standard.



Base: W300, D200, H250
Shade: W500, D250, H225
Overall Height 1550

Desk Lamp

Desk lamp is available with a walnut base and linen shade. Supplied with standard UK plug fitting.



Base: W310, D166, H210
Shade: W450, D170, H360
Overall Height 600

Ceiling Light Shade

Square linen shade with frosted diffuser top and bottom, fitted close to the ceiling (30mm drop). Suitable for 3no. low energy light bulbs.



W400, L400, H180

Desk / Dressing Table

A unique piece incorporating a cantilevered burl oak desk top supported by the walnut mirror panel and integrated drawer unit.



W1400, D530
H700 (desk), H1700 (mirror)

Hotel-roomsets

Headboards

This highly practical headboard has integrated nightstands and reading lights, and has been designed with walnut veneer panels flanking the figurative burled oak with a decorative lightly padded fabric-wrapped panel above. The headboard is fixed to the wall by means of split battens.



Queen Size Bed
W2420, H1250, D339

King Size Bed
W2730, H1250, D339

Twin Beds
W2420, H1250, D339

Bed Bases

Stylish walnut veneered bed base with distinctive turned legs, available as queen-size, king-size or single / twin bed.



Queen Size Bed
W1614, H350, L2046

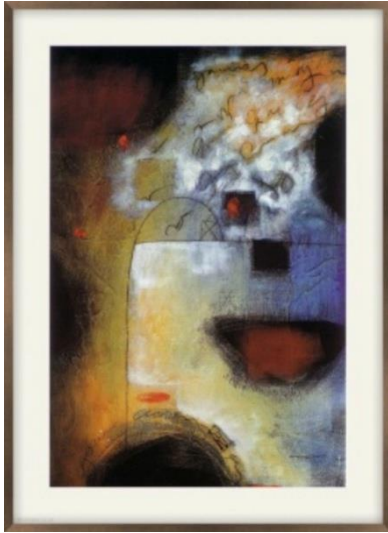
King Size Bed
W1924, H350, L2046

Twin Bed
W1004, H350, L1976

Hotel-roomsets

Artwork

Classic walnut-framed artwork (print) including security fixings.



W800, H1100

Wardrobe (Optional)

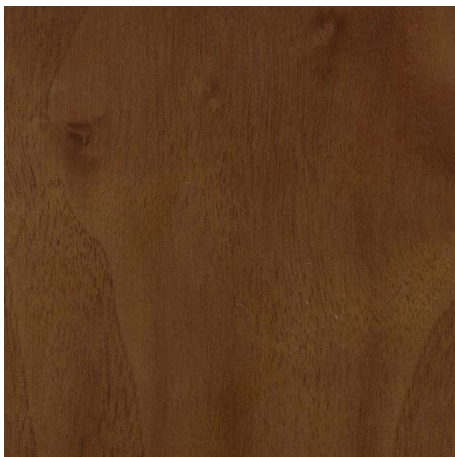
Space-saving wall-mounted open fronted wardrobe with hanging rail and shelves in a walnut finish including integrated light.



W1100, H1150, D550

Wood Finishes

Examples of the wood finishes are shown in detail below.



Walnut



Burled Oak

Note: All dimensions shown in mm

Hotel-roomsets

Upholstery Fabrics

All chair upholstery fabrics meet Contract specifications (+45,000 Martindale rubs) and FR requirements (BS5852 part 2 (1990): ignition source 5 (crib 5)).



Armchair & Desk Chair



Headboard



Desk Chair

Soft Furnishings – Curtains & Cushions

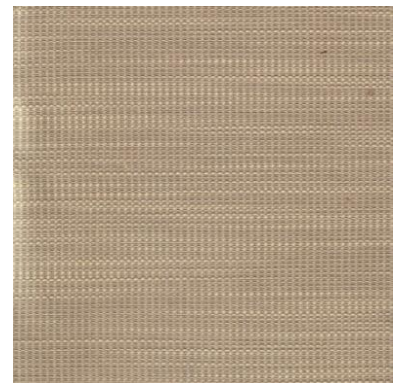
All fabrics for curtains are suitable for Contract use and meet FR requirements (BS5867 Part 2 (1980): Type B Clause 4.1 (Contract Curtaining)).



Curtains (Main Fabric)



Curtains (Edge Detail Fabric)



1no. Cushion

2no. Cushions

One pair of pencil pleat, blackout lined curtains measuring 2.0m (w) x 2.4m (h) including track (other size curtains available subject to on-site survey)

Hotel-roomsets

Soft Furnishings – Bed Throw

All fabrics for bed throws are suitable for Contract use and meet FR requirements (BS7175 section 3 (1989): ignition source 5).

Dimensions: 2.1m wide x 1.2m long (based on a queen-size bed).



Face Fabric



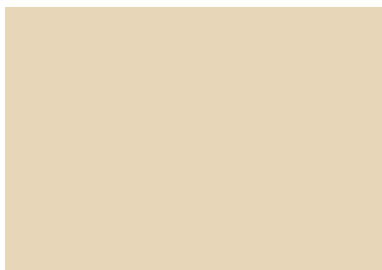
Reverse Fabric

Carpet

Bespoke tufted carpet (34oz)



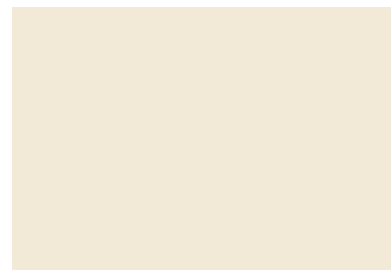
Paint Colours



Wall (Main)



Wall (Feature Wall)



Ceiling