

# Hotel-roomsets

## EXECUTIVE RANGE – FURNITURE & SOFT FURNISHINGS

The Executive Range Furniture exclusively available from Hotel-roomsets benefits from a classic walnut finish laid in a chequer board-effect alongside a complimentary warm oak, creating a sophisticated, contemporary look. The range is ideally suited for the upper 3 and 4-star hotel market, and has been custom-designed taking into account the major issues of practicality, maintenance and style that is deserving of this sector.

This is a new concept supplying the right product at the right time and includes the following benefits:

- No design or procurement fees
- Cost benefit from volume purchasing
- Top commercial quality FF&E
- 'Limited Edition' - only 500 rooms per range



Executive Range  
from £4,950 + VAT per roomset  
based on a minimum order of 50no. roomsets  
(price includes furniture, carpet, lighting and all soft goods and make up)

Contact Us  
[www.jdinterior.solutions](http://www.jdinterior.solutions)  
[info@jdinteriorsolutions.co.uk](mailto:info@jdinteriorsolutions.co.uk)  
+44 (0) 1733 309 498



WORKING IN  
PARTNERSHIP  
WITH



# Hotel-roomsets

## Nightstand

Walnut and oak veneered nightstand with elegantly tapered feet and subtle satin nickel door pulls with leather insert.



W480, H550, D450

## Desk Chair

Classic fully-upholstered chair offering comfort and practicality for work or dining.



W470, H850, D550, SH460

## Occasional Table

The round occasional table has a quartered top in walnut veneer with plain oak legs.



Ø450, H550

## Lounge Chair

The lounge chair is supplied in the oak finish with a contrasting textured neutral fabric as shown.



W680, H820, D713, SH450

# Hotel-roomsets

## Mirrors

Chequer board-effect walnut veneer surrounding glass mirror, supplied with keyhole fixings.



Full Length Mirror  
W700, H1500, D35



Dressing Table Mirror  
Ø450, H550

## Dressing Table Stool

Compact fully-upholstered stool with handle and concealed castors for ease of movement.



W450, H490, D460, SH400

## Table Lamp

Large cylindrical table lamp for use on each night stand. Base in solid wood with linen shade. Supplied with standard UK plug fitting.



Ø200 (base), Ø150 (shade), H780

# Hotel-roomsets

## Floor Lamp

Matching floor lamp with linen shade suspended from matt black metal stand. Supplied with UK plug fitting as standard.



Ø400 (base), Ø150 (shade), H1657

## Ceiling Light Shades

Light shade in walnut veneer with opaque diffuser top and bottom. Suitable for 1 no. circular fluorescent tube (approx 400mm dia).



Ø500, H155  
max. drop 1500 (pendant only)

## Combination Unit

An original, innovative piece that combines a desk, dressing table and cabinet into a single item of furniture.



W2450, H750, D700

# Hotel-roomsets

## Headboards

The chequer board-effect walnut veneer surrounds comfortable, lightly-padded upholstered panels (supplied in a maintenance-friendly stain protected fabric as standard). Each headboard is simply fixed to the wall by means of split battens.



Queen Size Bed  
W2550, H1350, D48

King Size Bed  
W3060, H1350, D48

Twin Beds  
W2560, H1400, D48

## Bed Bases

Elegant oak bed base, available as queen-size, king-size or single / twin beds.



Queen Size Bed  
W1540, H362, L1990

King Size Bed  
W1850, H362, L1990

Twin Bed  
W930, H362, L1920

# Hotel-roomsets

## Artwork

Stylish square oak-framed artwork print including security fixings.



W870, H870

## Wardrobe (Optional)

Full size wardrobe with chequer-board effect front doors and oak veneered sides with tapered feet and long satin nickel pull handles.



W1200, H1993, D600

## Wood Finishes

Examples of the wood finishes are shown in detail below.



Walnut



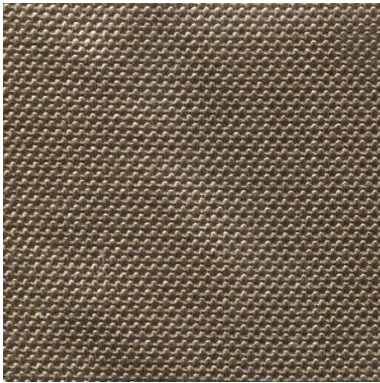
Oak

Note: All dimensions shown in mm

# Hotel-roomsets

## Upholstery Fabrics

All upholstery fabrics meet Contract specifications (40,000 Martindale rubs for chairs, 30,000 Martindale rubs for headboard) and FR requirements (BS5852 Part 2 (1990): Ignition Source 5 (Crib 5)).



Armchair & Desk Chair



Headboard



Stool

## Soft Furnishings – Curtains & Cushions

All fabrics for curtains are suitable for Contract use and meet FR requirements (BS5867 Part 2 (1980): Type B Clause 4.1 (Contract Curtaining)).



Curtains (Main Fabric)



Curtains (Edge Detail Fabric)



2no. Cushions

3no. Cushions

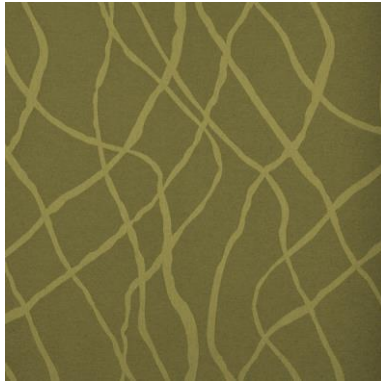
One pair of pencil pleat, blackout lined curtains measuring 2.0m (w) x 2.4m (h) including track (other size curtains available subject to on-site survey).

# Hotel-roomsets

## Soft Furnishings – Bed Throw

All fabrics for bed throws are suitable for Contract use and meet FR requirements (BS7175 section 3 (1989): ignition source 5).

Dimensions: 2.1m wide x 1.3m long (based on a queen-size bed).



Face Fabric



Reverse Fabric

## Carpet

Bespoke tufted carpet (34oz)



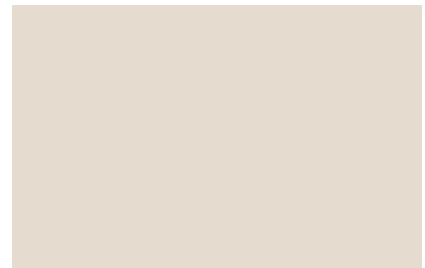
## Paint Colours



Wall (Main)



Wall (Feature Wall)



Ceiling