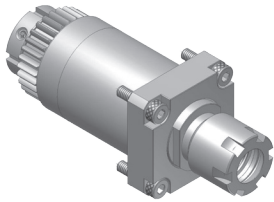


# SWISS TOOLING

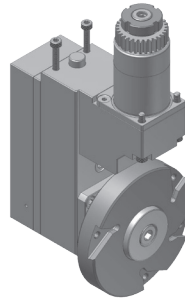


20 Thompson Rd | East Windsor | CT 06088  
1.800.249.5662 | 860.623.4132 Fax  
[www.komaprecision.com](http://www.komaprecision.com) | [info@komaprecision.com](mailto:info@komaprecision.com)

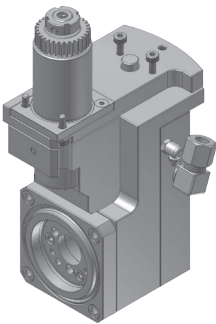
## JSL20RB/JSL20RBY TOOLING FOR GANG TOOL POST (SHANK : Ø34mm)



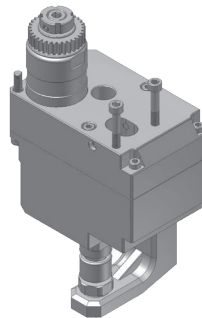
**JSR161000**  
Cross drilling/milling unit  
RATIO 1 : 1  
RPM(MAX) 8000  
TOOL CLAMPING ER16M



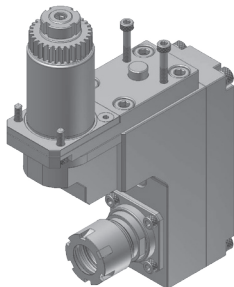
**JSR150100**  
Polygon unit  
RATIO 1 : 1  
RPM(MAX) 3000  
CUTTER OD(MAX) Ø95mm



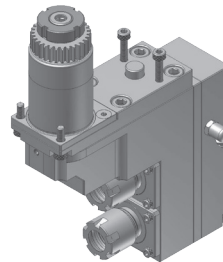
**JSR260100**  
Thread whirling unit  
RATIO 1 : 1  
RPM(MAX) 6000  
THREAD(MAX) M12  
HELIX ANGLE ±15°



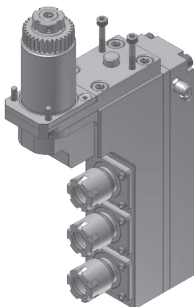
**JSR301000**  
Slotting unit  
RATIO 1 : 0.374  
RPM(MAX) 4000  
SAW OD(MAX) Ø70mm  
SAW ARBOR SHANK Ø12.7mm



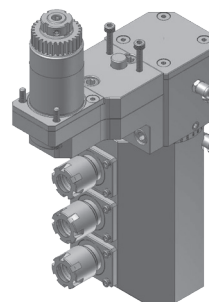
**JSR442100**  
1 spindle drilling/milling unit  
RATIO 1 : 1  
RPM(MAX) 6000  
TOOL CLAMPING ER20M



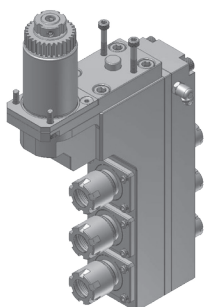
**JSR446200**  
2 spindle drilling/milling unit  
RATIO 1 : 1  
RPM(MAX) 6000  
TOOL CLAMPING ER16M



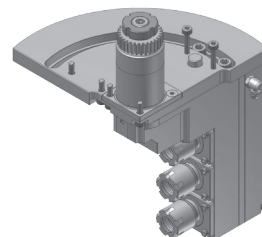
**JSR446300-1**  
3 spindle drilling/milling unit  
RATIO 1 : 1  
RPM(MAX) 6000  
TOOL CLAMPING ER16M



**JSR496300-2**  
3 spindle drilling/milling unit  
RATIO 1 : 1  
RPM(MAX) 6000  
TOOL CLAMPING ER16M  
ANGLE ADJUSTMENT ±180°

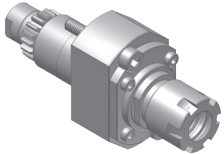


**JSR546300-1**  
3 spindle drilling/milling unit  
RATIO 1 : 1  
RPM(MAX) 6000  
TOOL CLAMPING  
Front side : ER16M  
Back side : ER11M

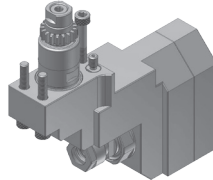


**JSR596300-1**  
3 spindle drilling/milling unit  
RATIO 1 : 1  
RPM(MAX) 6000  
TOOL CLAMPING  
Front side : ER16M  
Back side : ER11M  
ANGLE ADJUSTMENT 0~90°

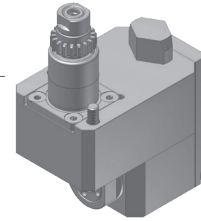
## JSL20RB/JSL20RBY TOOLING FOR BACK TOOL POST (SHANK Ø22mm)



**JSL761000**  
Drilling/milling unit  
RATIO 1 : 1  
RPM(MAX) 6000  
TOOL CLAMPING ER16M

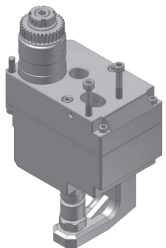


**JSR731100**  
Slotting unit  
RATIO 1 : 0.55  
RPM(MAX) 4000  
TOOL CLAMPING ER11A  
CENTER ADJUSTMENT ±1mm

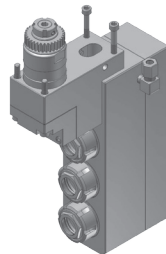


**JSR861100**  
Cross drilling/milling unit  
RATIO 1 : 1  
RPM(MAX) 6000  
TOOL CLAMPING ER11

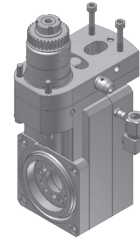
## JSL26AB/JSL32AB/JSL42AB TOOLING FOR GANG TOOL POST (SHANK : Ø36mm)



**JSL301000**  
Slotting unit  
RATIO 1 : 0.36  
RPM(MAX) 3000  
SAW OD(MAX) Ø70mm  
SAW ARBOR SHANK Ø12.7mm

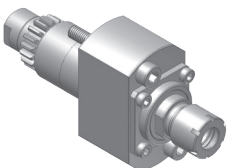


**JSL523000**  
3 spindle drilling/milling unit  
RATIO 1 : 1  
RPM(MAX) 6000  
TOOL CLAMPING  
Front side : ER20  
Back side : ER11M

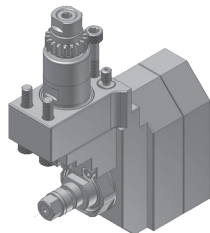


**JSL806000**  
Thread whirling unit  
RATIO 1 : 1  
RPM(MAX) 6000  
THREAD(MAX) M12  
HELIX ANGLE ±15°

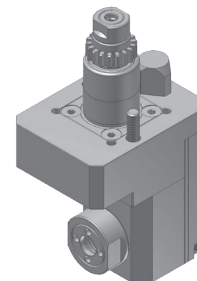
## TOOLING FOR BACK TOOL POST (SHANK Ø22mm)



**STR711000**  
Drilling/milling unit  
RATIO 1 : 1  
RPM(MAX) 6000  
TOOL CLAMPING ER11M  
STAR ITEM NO. 541-61



**STR731000**  
Slotting unit  
RATIO 1 : 0.55  
RPM(MAX) 4000  
SAW OD(MAX) Ø50  
SAW ARBOR SHANK  
Ø5.0/6.0/8.0/12.7/13.0mm



**STR811000-10J/  
STR811000-20R**  
Cross drilling/milling unit  
RATIO 1 : 1  
RPM(MAX) 6000  
TOOL CLAMPING ER11



20 Thompson Rd | East Windsor | CT 06088  
1.800.249.5662 | 860.623.4132 Fax  
[www.komaprecision.com](http://www.komaprecision.com) | [info@komaprecision.com](mailto:info@komaprecision.com)

ROTARY TABLES | ANGLE HEADS | LIVE TOOLS | SWISS TOOLS | TOOL PRESETTERS | PROBING SYSTEMS