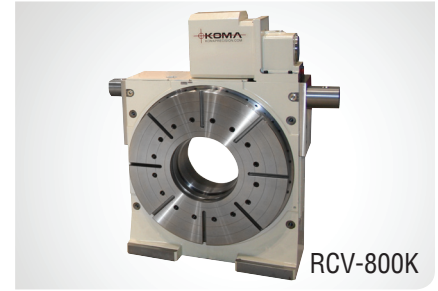


**RCV-800K, 1000K**

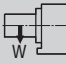


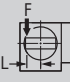
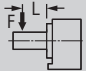
HIGH CAPACITY • LARGE THRU HOLE

The RCV-Series rotary tables feature an extra large thru hole for accommodating large workpieces. The RCV-800 can be equipped with either an 800mm or an optional 1,000mm face plate, and the RCV-1000 can hold either a 1,000mm or an optional 1,200mm face plate.



**Specifications ▶**

Dimensions = mm

Table Model		RCV-800K	RCV-1000K
Table diameter (optional)		800 (1,000)	1,000 (1,200)
Center height		530	625
Center bore	Nose Diameter	360H7 x 45	410H7 x 65
	Thru Diameter	310	360
Table T-slot width		18H7	22H7
Guide block width		22h7	
Servo motor (Fanuc)*		Alpha 12i	Alpha 12i
Maximum motor speed	rpm	3,000	
Speed reduction ratio		1/360	
Maximum table speed	rpm	8.33	
Inertia converted into motor shaft	$\times 10^{-3}\text{kg}\cdot\text{m}^2$	4.89	12.2
Clamp system**		Hydraulic	
Clamp torque @500psi	Nm (ft. lbs.)	7,000 (5,159)	20,000 (14,740)
Indexing accuracy	arc sec.	$\pm 7.5$	
Repeatability	arc sec.	$\pm 2$	
Net Weight	kg (lbs.)	1,450 (3,190)	2,500 (5,500)
Allowable wheel torque	Nm (ft. lbs.)	7,840 (5,778)	13,230 (9,751)
Allowable work inertia	$\text{kg}\cdot\text{m}^2$	320	874
Allowable work weight	 <b>kg (lbs)</b> [w/ tailstock]	2,000 (4,400) [4,000 (8,000)]	3,500 (7,700) [7,000 (15,400)]
	 <b>kg (lbs)</b>	4,000 (8,800)	7,000 (15,400)
Allowable load when table clamped	 <b>N (lbf)</b>	100,000 (22,400)	185,000 (41,440)
	 <b>Nm (ft. lbs.)</b>	7,000 (5,159)	20,000 (14,740)
	 <b>Nm (ft. lbs.)</b>	11,600 (8,550)	22,900 (16,877)

\* Other motors & RPM available

\*\* Booster optional

Specifications subject to change without notice

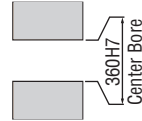
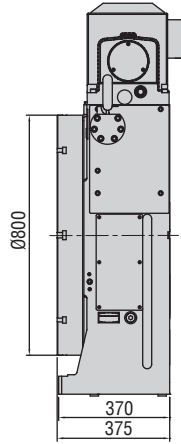
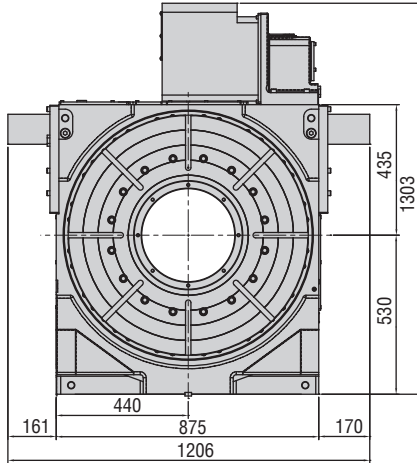


# NC Rotary Tables ▶ Big Bore Models ▶ Horizontal Machining Center

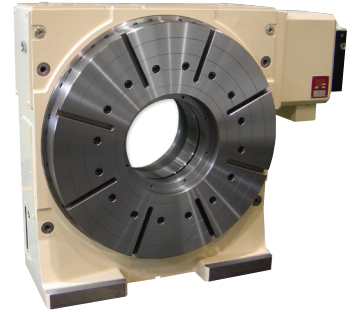
## Dimensions ▶

Drawings not to scale • Dimensions = mm

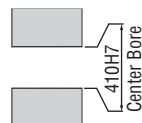
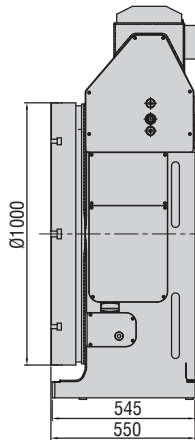
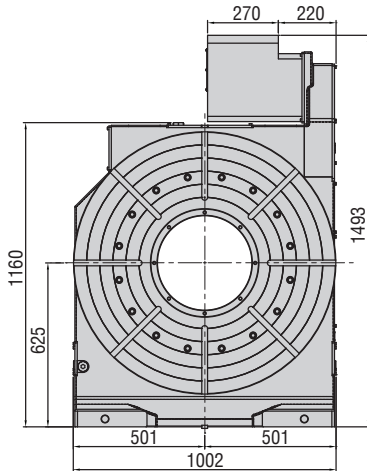
### RCV-800K



- RCV-800R  
Shown with 800mm face plate.  
Also available with optional 1,000mm face plate.



### RCV-1000K



The dimensions above are for tables with a FANUC servo motor. Other motors available (dimensions may increase).

## Clamping Block and Bolt ▶

Dimensions = mm

	Type	Q'ty	T-Slot Width	A	B	C	D	E	F	G	H	I	J	K	L	M
RCV-800K	II	4	22	60	28	95	29	16	50	88	27	13	145	100	32	20
RCV-1000K	II	4	22	60	28	95	29	16	50	88	27	13	145	100	32	20

Note: When using a machine with a T-slot pitch other than the above, use suitable clamping blocks and bolts that are available on the market, or order custom-made ones from KOMA (opt.)

### Type II

