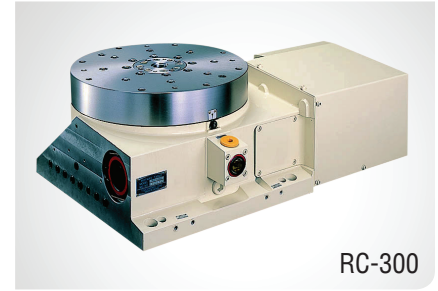


RC-250, 300, 400, 500

HORIZONTAL SETTING WITH ROTARY JOINT

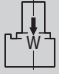
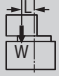



RC-Series rotary tables are designed for integration into a specialized machine tool or transfer line. RC-Series tables feature extra rigid castings for heavy duty applications. Standard equipment for RC-Series tables includes a built-in (8) port hydraulic/pneumatic rotary joint unit and (1) coolant port.



RC-300

Specifications ►

Dimensions = mm

Table Model		RC-250	RC-300	RC-400	RC-500
Table diameter		250	320	400	500
Table height		230	250	260	270
Servo motor (Fanuc)*		Alpha 8i	Alpha 12i	Alpha 22i	Alpha 22i
Maximum motor speed rpm		3,000			
Speed reduction ratio		1/36	1/45	1/45	1/90
Maximum table speed rpm		83.3	66.7	66.7	33.3
Inertia converted into motor shaft x 10 ⁻³ kg·m ²		.68	1.36	2.30	3.60
Clamp system**		Hydraulic			
Clamp torque @500psi Nm (ft. lbs.)		540 (398)	900 (663)	1,900 (1,400)	3,400 (2,506)
Indexing accuracy arc sec.		±12.5			
Repeatability arc sec.		±2			
Net Weight kg (lbs.)		130 (286)	200 (440)	290 (638)	390 (858)
Allowable wheel torque Nm (ft. lbs.)		660 (486)	966 (712)	1,535 (1,131)	2,815 (2,075)
Allowable work inertia kg·m ²		2.36	7.1	10.9	33.5
Allowable work weight	 kg (lbs)	300 (660)	450 (990)	650 (1,430)	650 (1,430)
Allowable eccentric load	 Nm (ft. lbs.)	350 (258)	700 (516)	960 (708)	960 (708)
Allowable load when table clamped	 N (lbf)	19,600 (4,390)	29,400 (6,586)	39,200 (8,781)	39,200 (8,781)
	 Nm (ft. lbs.)	540 (398)	900 (663)	1,900 (1,400)	3,400 (2,506)
	 Nm (ft. lbs.)	931 (686)	2,000 (1,474)	4,000 (2,948)	4,000 (2,948)

* Other motors & RPM available

** Booster optional

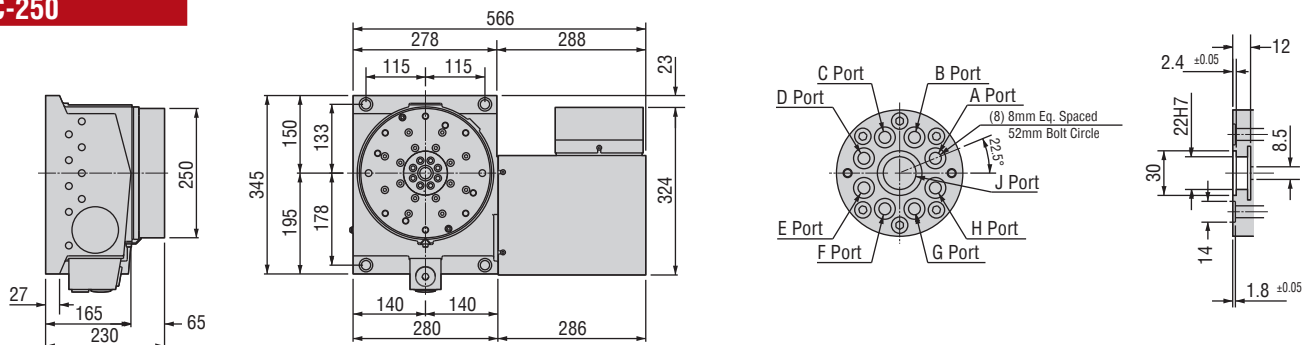
Specifications subject to change without notice



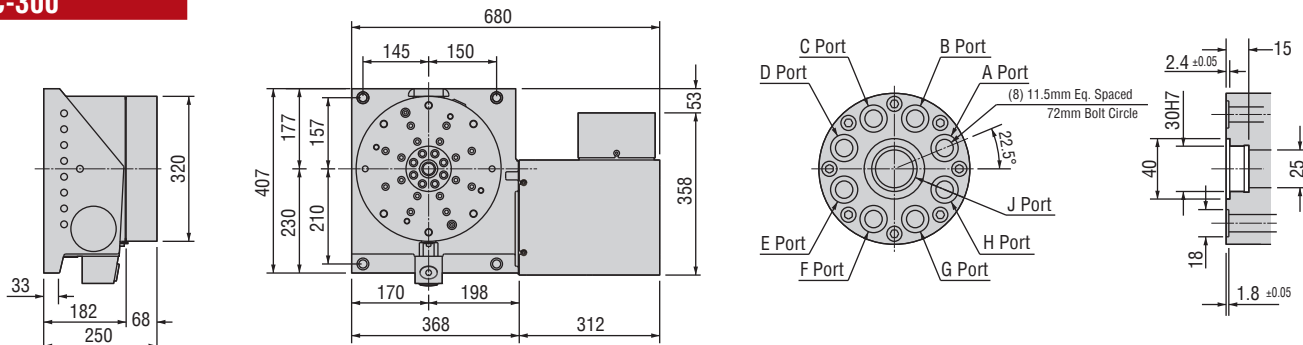
Dimensions ▶

Drawings not to scale • Dimensions = mm

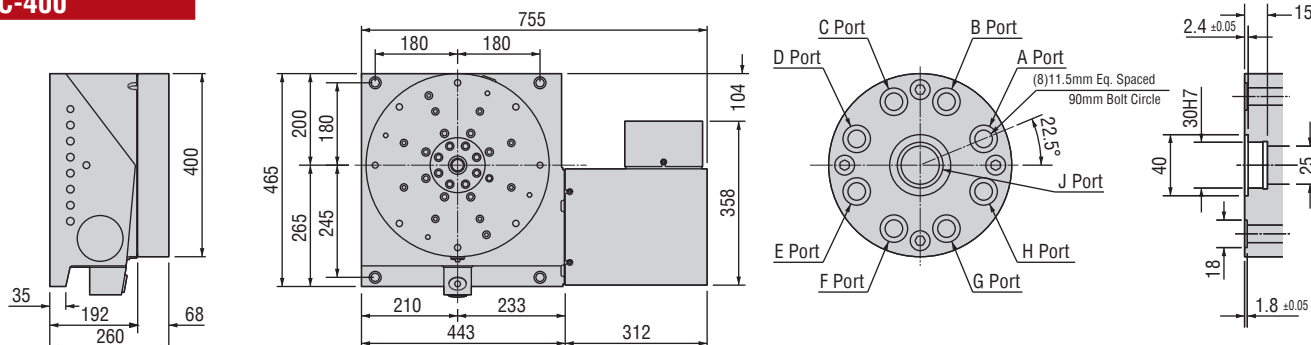
RC-250



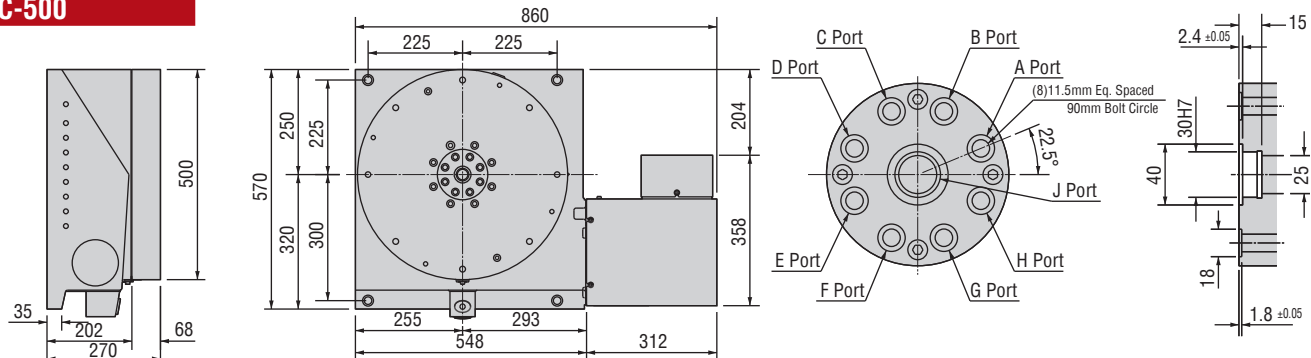
RC-300



RC-400



RC-500



The dimensions above are for tables with a FANUC servo motor. Other motors available (dimensions may increase).