

# T90-5



Ratio  
Rapporto / Verhältnis  
**1:1**



RPM  
Velocità / Drehzahl max.  
**3.000 min<sup>-1</sup>**



Max. axial load  
Max. carico assiale / Max. Axialbelastung  
**1.800 N**



Torque  
Momento torcente / Drehmoment  
**100 Nm**



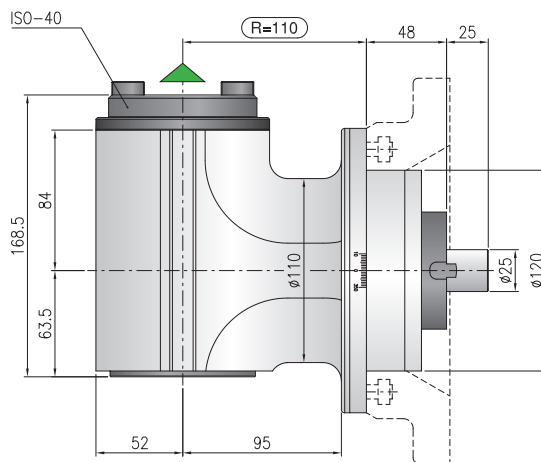
Weight  
Peso / Gewicht  
**22 kg**



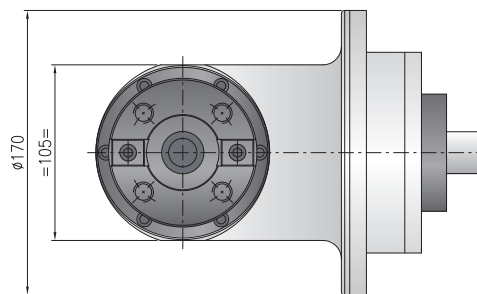
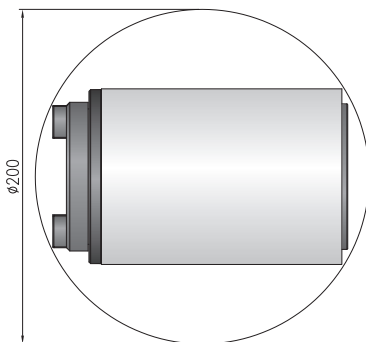
Collet  
Pinza / Spannzange  
**ISO 40**

**\* STANDARD EQUIPMENT INCLUDES:**

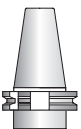
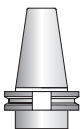
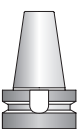
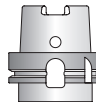
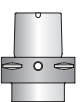
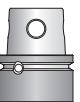
- Wooden case - wrenches - Grease tube - Instruction book
- Cassa legno - Ghiera ER chiavi di servizio - Tubetto di grasso - Libro istruzioni
- Holzkiste - Schraubenschlüssel - Tube mit Fett - Bedienungsanleitung



Minimum diameter without tool  
Diametro minimo senza utensile  
Durchmesser min. ohne



▲ Direction of rotation same as machine spindle / senso di rotazione uguale al mandrino / Drehrichtung gleich wie Antriebsspindel

Shank/Cono/Aufnahme						
	DIN-69871	CAT	MAS-BT	HSK	CAPTO	KM

**Option / Opzione / Option**



bar max  
**12**

Coolant through spindle  
Addizione refrigerante interna  
Kühlmittelzufuhr durch Spindel



min<sup>-1</sup>  
**6.000**

High speed optional RPM max.  
Opzione alta velocità RPM max.  
Drehzahl max.



**HSK-63**

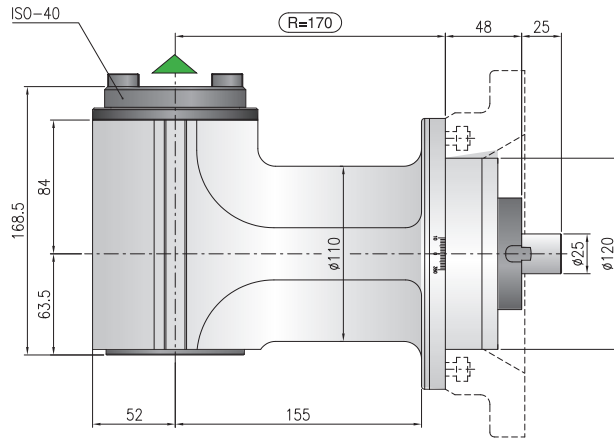
Quick Change  
Attacco rapido  
Schnellwechselfaufnahme



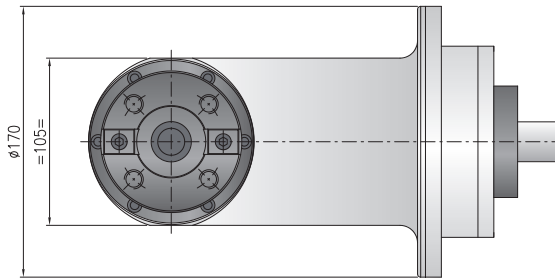
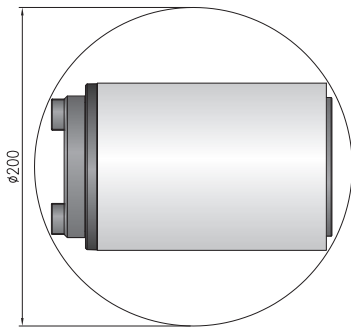
**OIL**

Oil lubrication  
Lubrificazione  
Ölschmierung

## T90-5L



Minimum diameter without tool  
 Diametro minimo senza utensile  
 Durchmesser min. ohne



- Ratio**  
Rapporto / Verhältnis  
**1:1**
- RPM**  
Velocità / Drehzahl max.  
**3.000 min<sup>-1</sup>**
- Max. axial load**  
Max. carico assiale / Max. Axialbelastung  
**1.800 N**
- Torque**  
Momento torcente / Drehmoment  
**100 Nm**
- Weight**  
Peso / Gewicht  
**26,2 kg**
- Collet**  
Pinza / Spannzange  
**ISO 40**

**\* STANDARD EQUIPMENT INCLUDES:**

- Wooden case - wrenches - Grease tube - Instruction book
- Cassa legno - Ghiera ER chiavi di servizio - Tubetto di grasso - Libro istruzioni
- Holzkiste - Schraubenschlüssel - Tube mit Fett - Bedienungsanleitung

Direction of rotation same as machine spindle / senso di rotazione uguale al mandrino / Drehrichtung gleich wie Antriebsspindel

Shank/Cono/Aufnahme						
	DIN-69871	CAT	MAS-BT	HSK	CAPTO	KM

**Option / Opzione / Option**

bar max <b>12</b>	min <sup>-1</sup> <b>6.000</b>	<b>HSK-63</b>	<b>OIL</b>
Coolant through spindle Adduzione refrigerante interna Kühlmittelzufuhr durch Spindel	High speed optional RPM max. Opzione alta velocità RPM max. Drehzahl max.	Quick Change Attacco rapido Schnellwechselladung	Oil lubrication Lubrificazione Ölschmierung

